

WILSON SCHOOL

1601 Wilson Boulevard, Arlington, VA

Building Level Planning Committee

February 10, 2016

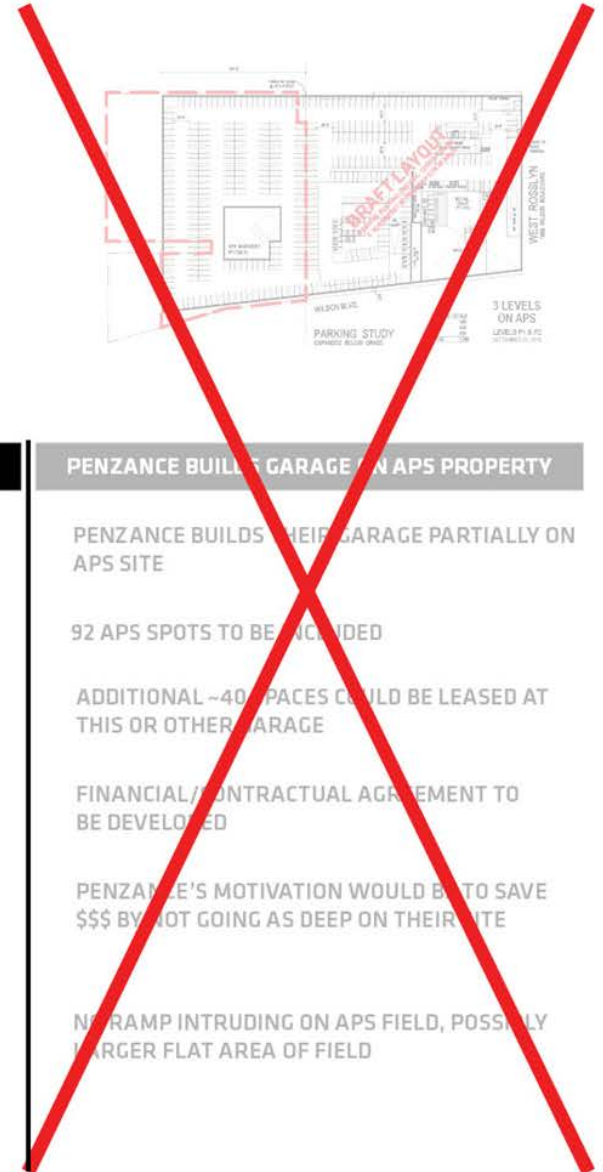
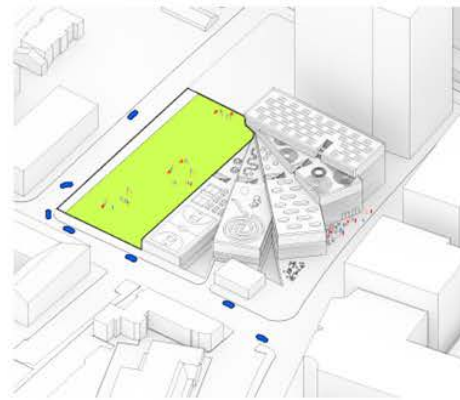
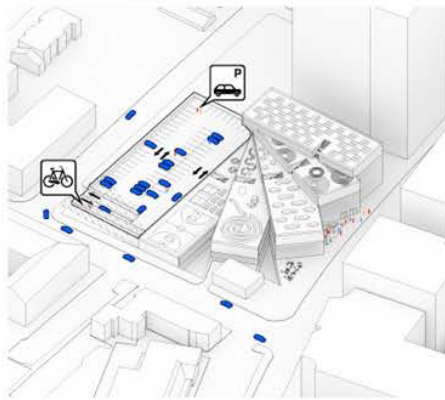
LEO A DALY



BIG

**GENERAL UPDATES
ENTRANCE STUDIES & DISCUSSION
TERRACE PROGRAM DISCUSSION**

GENERAL UPDATES



APS BUILT GARAGE

NO GARAGE

PENZANCE BUILDS GARAGE ON APS PROPERTY

APS OWNED AND CONTROLLED PARKING GARAGE

92 SPACES FOR H-B WOODLAWN & STRATFORD PROGRAMS

ADDITIONAL ~40 SPACES LEASED AT NEARBY GARAGE

GRADUALLY LOWER LEASED SPACES AMOUNT TO TDM TARGET OF 92 SPACES

LEASE ~130 SPACES AT NEARBY GARAGE(S)

GRADUALLY LOWER LEASED SPACES AMOUNT TO TDM TARGET OF 92 SPACES

PLENTY OF PRIVATE GARAGES IN AREA TO NEGOTIATE WITH, MANY WITH SURPLUS SPACES

ALSO POSSIBLE TO NEGOTIATE DEAL TO HAVE ACCESS TO NEIGHBORING DEVELOPER'S GARAGE TO MEET SCHOOLS PARKING REQUIREMENT

NO RAMP INTRUDING ON FIELD, POSSIBLY LARGER FLAT AREA OF FIELD

PENZANCE BUILDS THEIR GARAGE PARTIALLY ON APS SITE

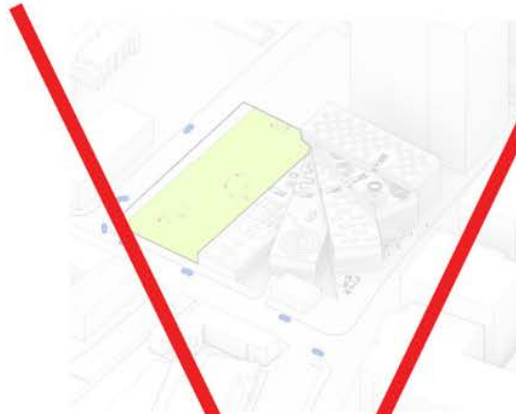
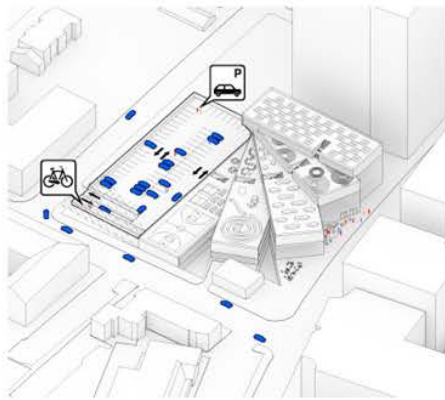
92 APS SPOTS TO BE PROVIDED

ADDITIONAL ~40 SPACES COULD BE LEASED AT THIS OR OTHER GARAGE

FINANCIAL/ CONTRACTUAL AGREEMENT TO BE DEVELOPED

PENZANCE'S MOTIVATION WOULD BE TO SAVE \$\$\$ BY NOT GOING AS DEEP ON THEIR SITE

NO RAMP INTRUDING ON APS FIELD, POSSIBLY LARGER FLAT AREA OF FIELD



APS BUILT GARAGE

NO GARAGE

PENZANCE BUILDS GARAGE ON APS PROPERTY

APS OWNED AND CONTROLLED PARKING GARAGE

92 SPACES FOR H-B WOODLAWN & STRATFORD PROGRAMS

ADDITIONAL ~40 SPACES LEASED AT NEARBY GARAGE

GRADUALLY LOWER LEASED SPACES AMOUNT TO TDM TARGET OF 92 SPACES

LEASE ~130 SPACES AT NEARBY GARAGE(S)

GRADUALLY LOWER LEASED SPACES AMOUNT TO TDM TARGET OF 92 SPACES

PLENTY OF PRIVATE GARAGES IN AREA TO NEGOTIATE WITH, MANY WITH SURPLUS SPACES

ALSO POSSIBLE TO NEGOTIATE DEAL TO HAVE ACCESS TO NEIGHBORING DEVELOPER'S GARAGE TO MEET SCHOOLS PARKING REQUIREMENT

NO RAMP INTRUDING ON FIELD, POSSIBLY LARGER FLAT AREA OF FIELD

PENZANCE BUILDS THEIR GARAGE PARTIALLY ON APS SITE

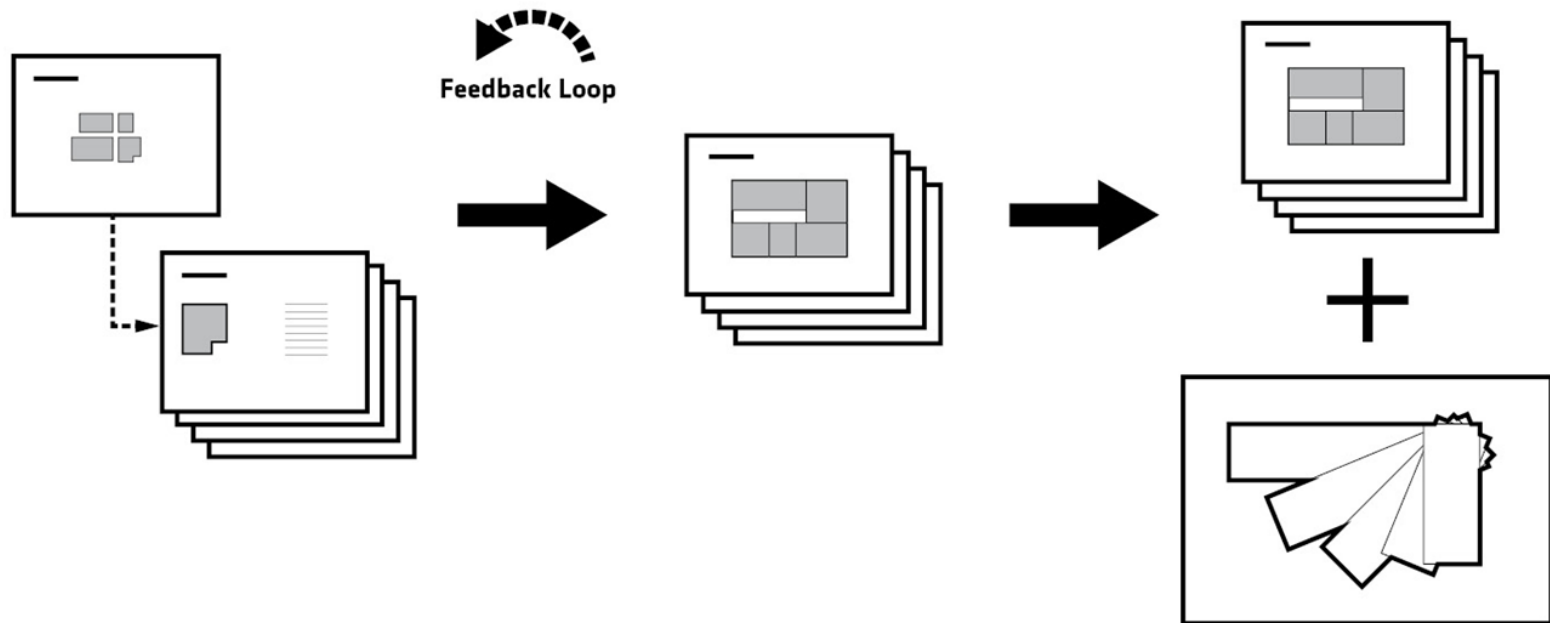
92 APS SPOTS TO BE PROVIDED

ADDITIONAL ~40 SPACES COULD BE LEASED AT THIS OR OTHER GARAGE

FINANCIAL/ CONTRACTUAL AGREEMENT TO BE DEVELOPED

PENZANCE'S MOTIVATION WOULD BE TO SAVE \$\$\$ BY NOT GOING AS DEEP ON THEIR SITE

NO RAMP INTRUDING ON APS FIELD, POSSIBLY LARGER FLAT AREA OF FIELD



FEBRUARY 3-5

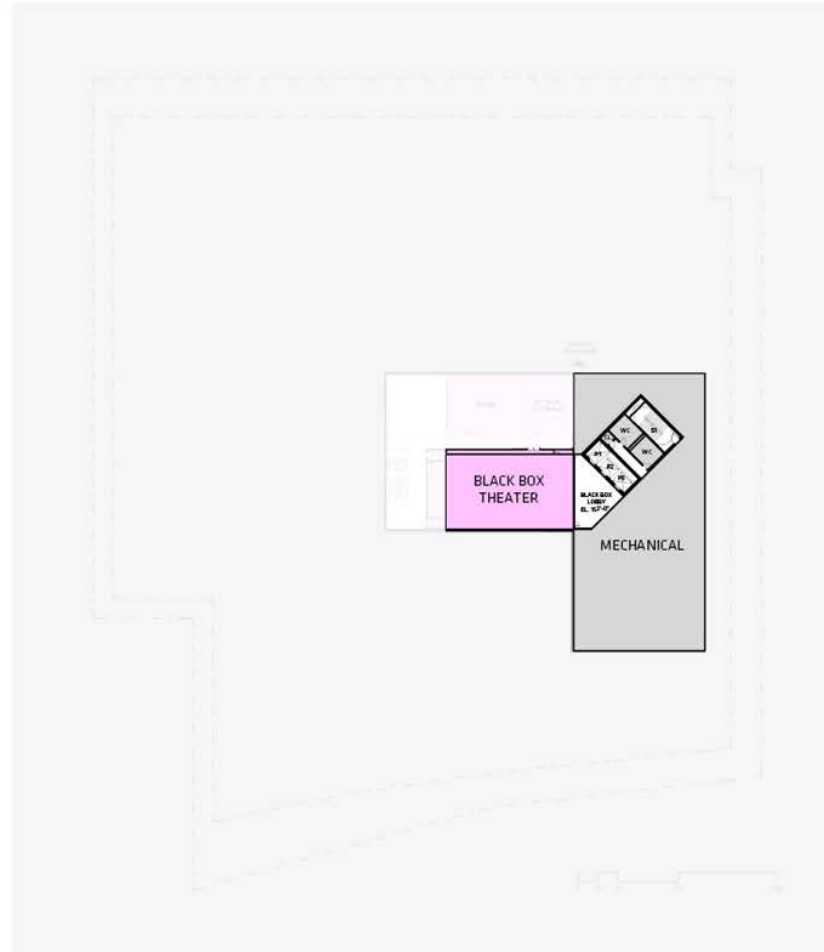
Departmental meetings
Review of Draft List of Spaces

FEBRUARY 28

Review Final Draft of List of Spaces

MARCH 30

List of Spaces Document complete
Plan Layouts Finalized



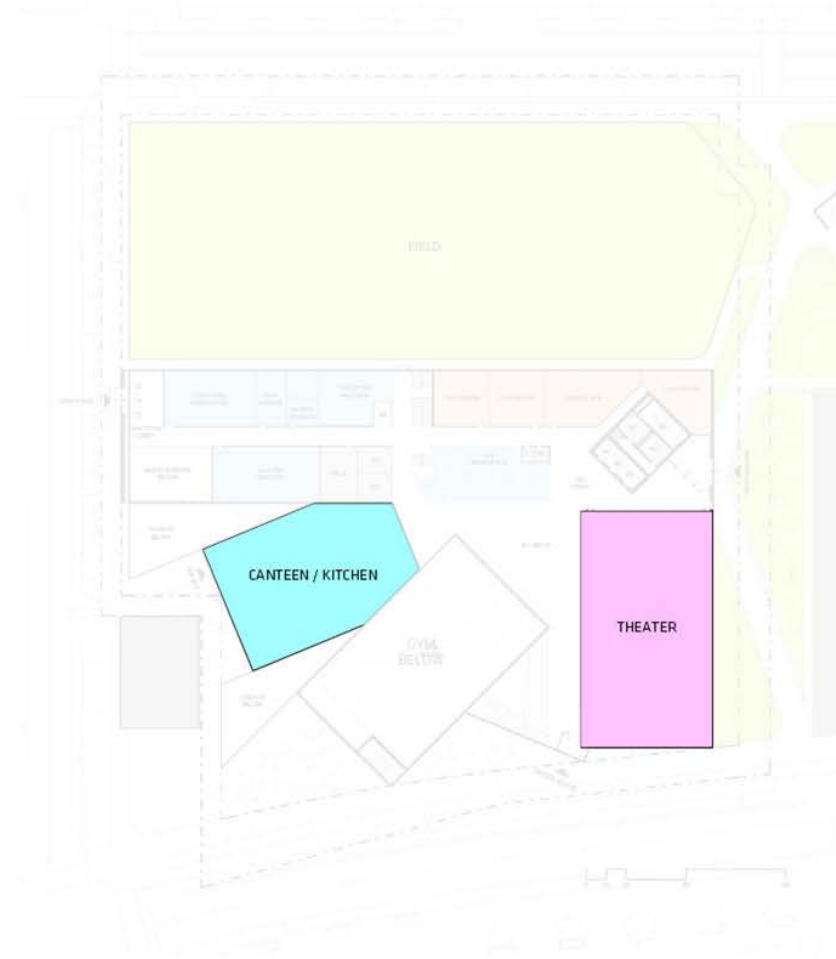
CURRENT FLOOR PLAN





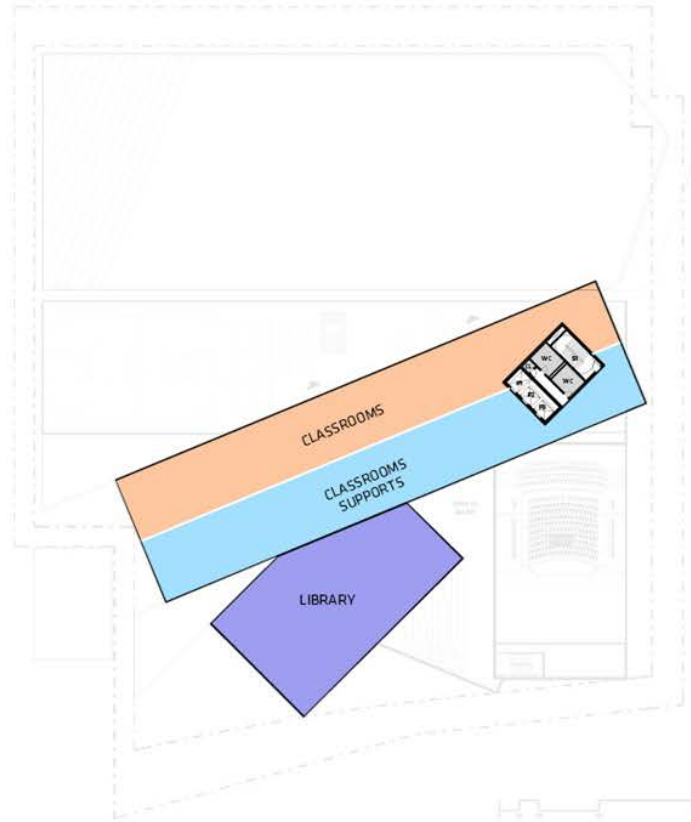
CURRENT FLOOR PLAN





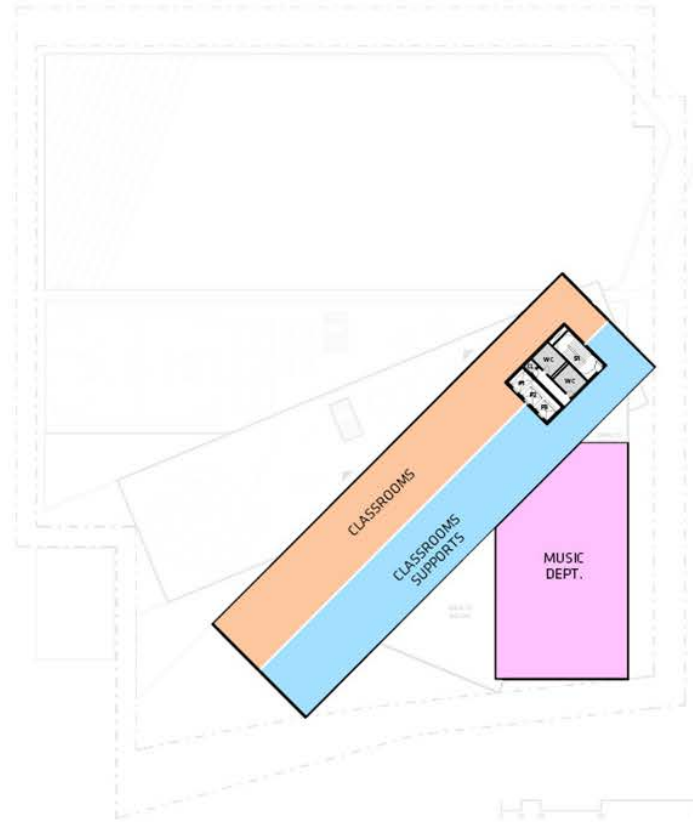
CURRENT FLOOR PLAN





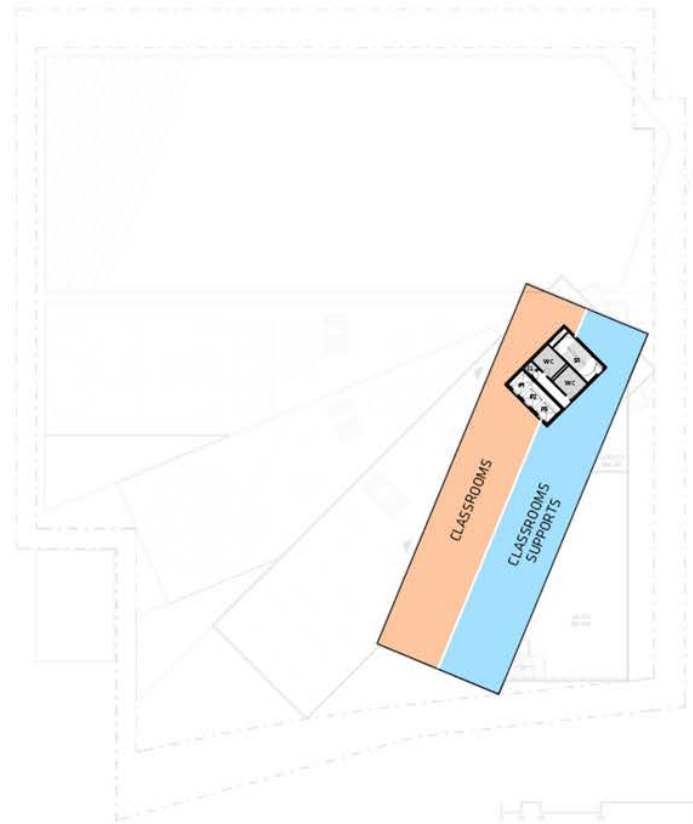
CURRENT FLOOR PLAN





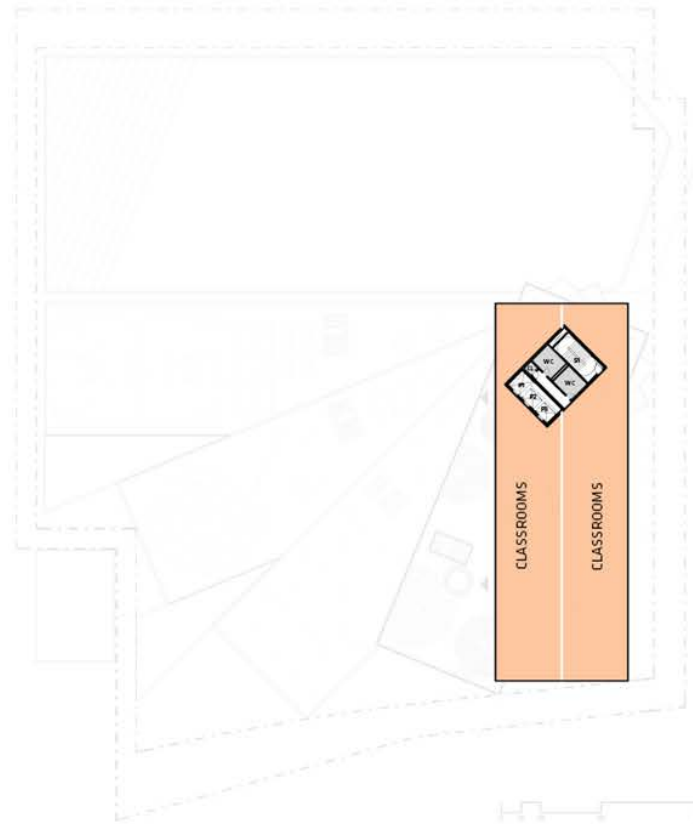
CURRENT FLOOR PLAN





CURRENT FLOOR PLAN

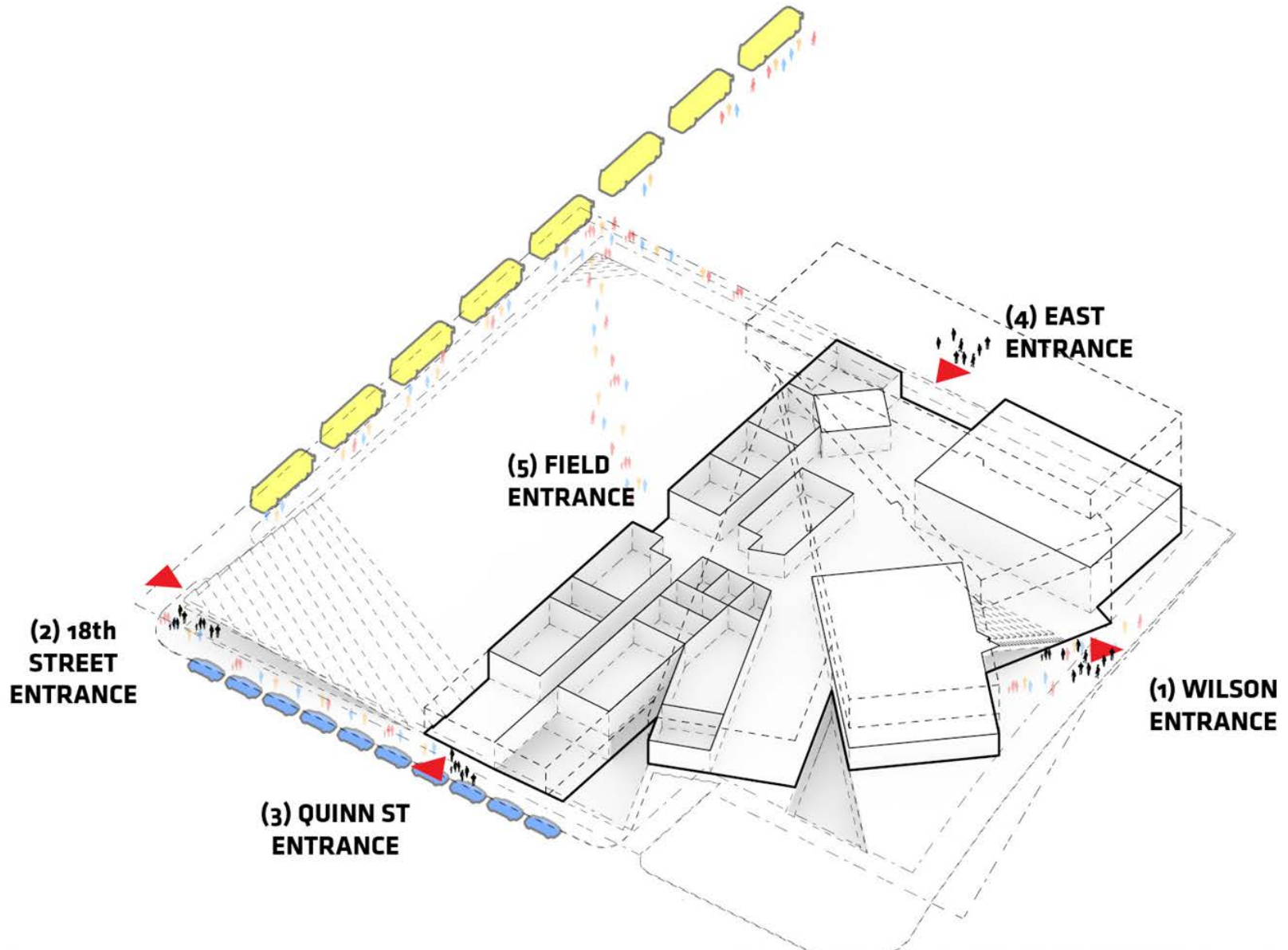




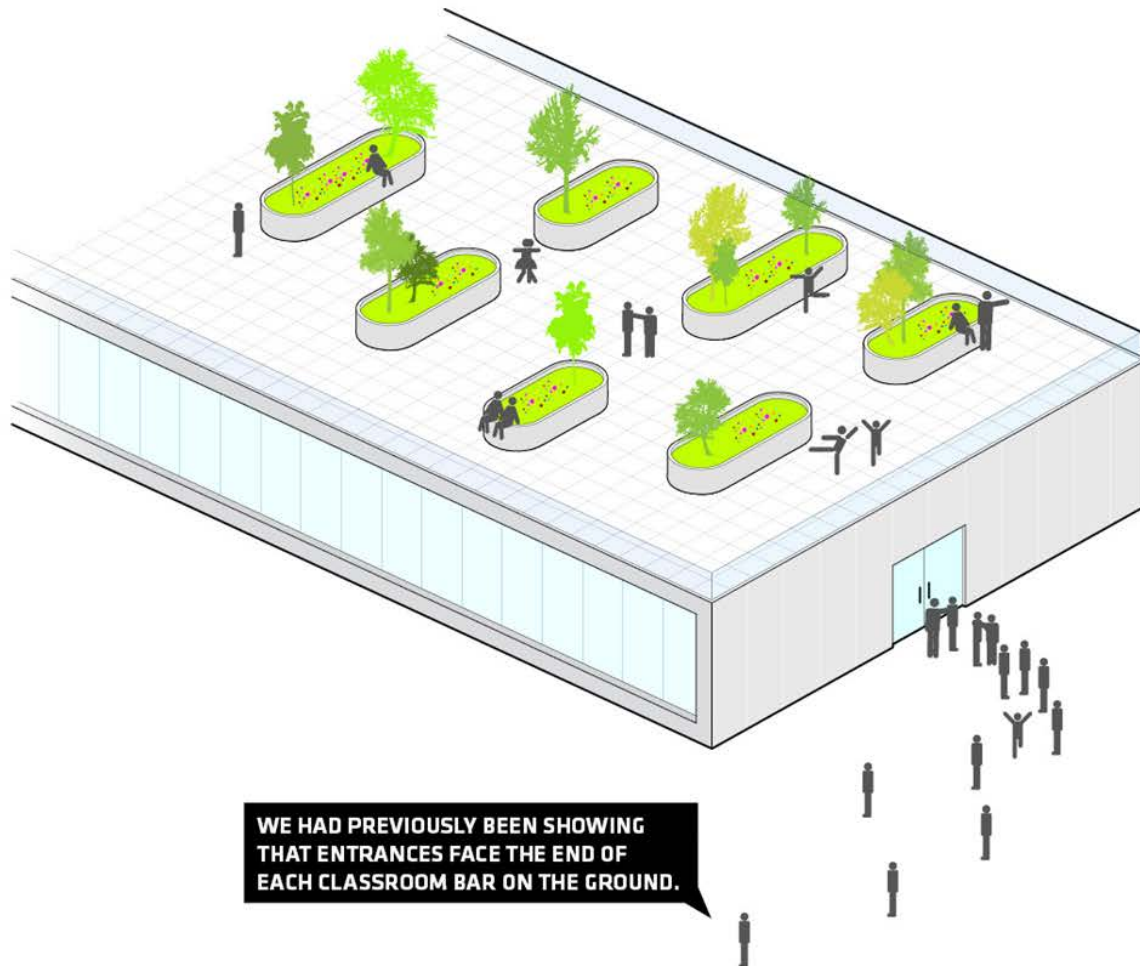
CURRENT FLOOR PLAN

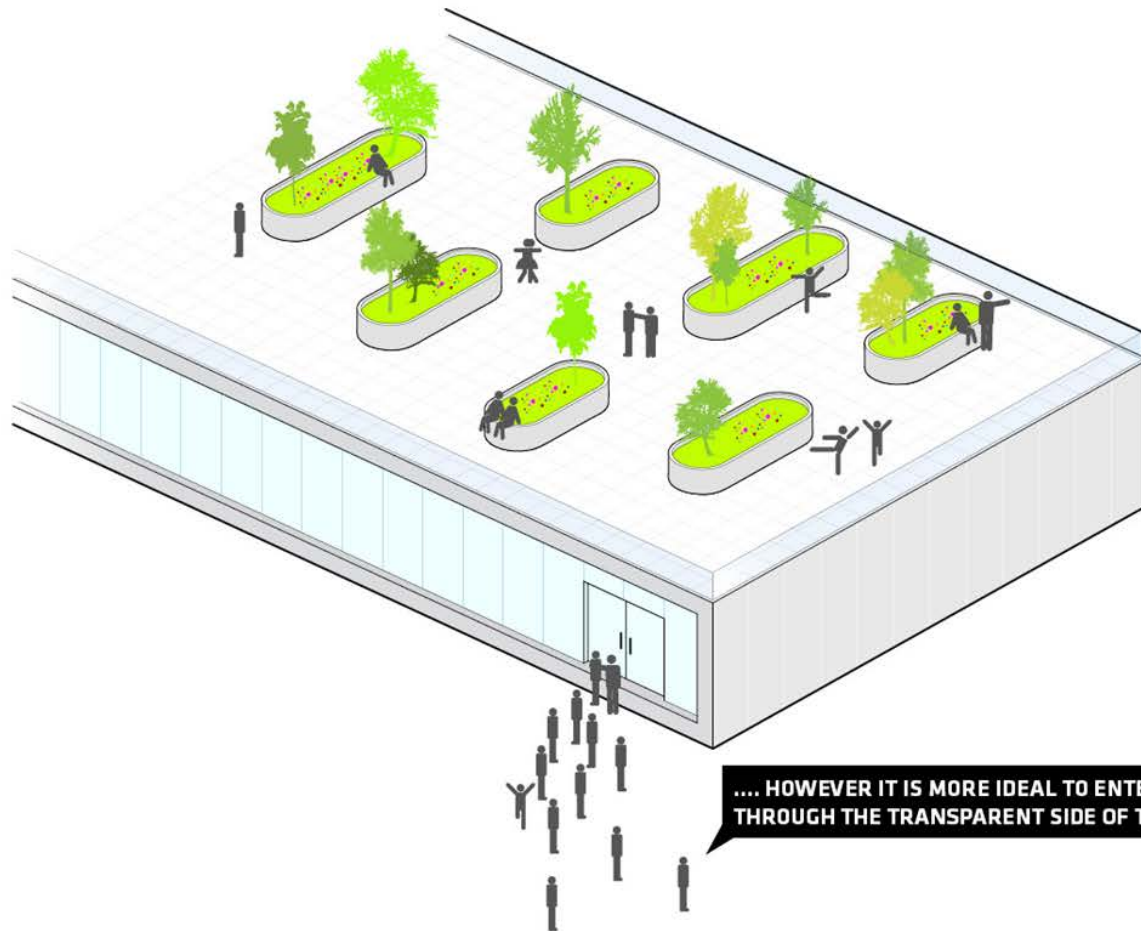


ENTRANCE STUDIES



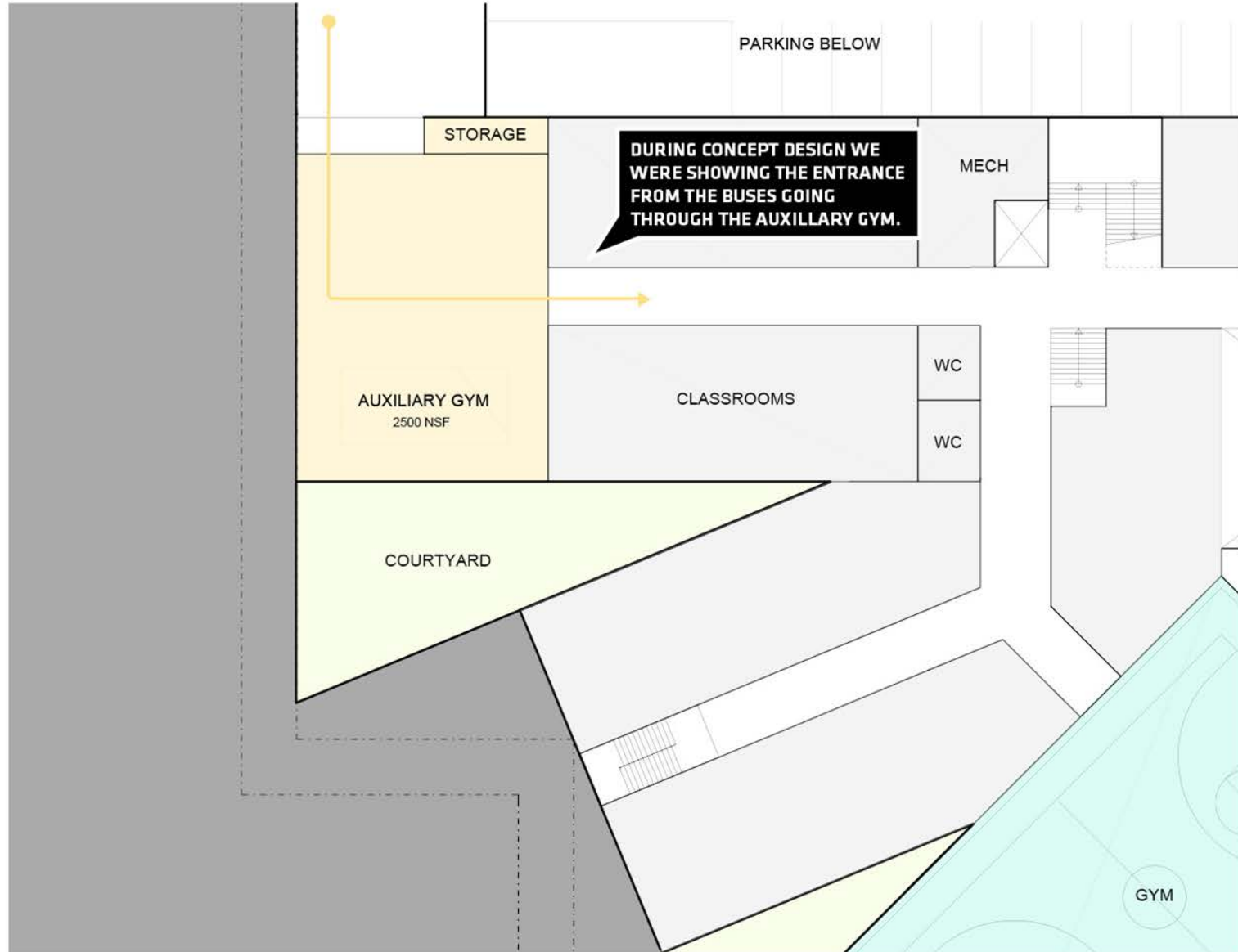
WILSON BOULEVARD AS “MAIN” ENTRY
EAST / PARK ENTRY MAJOR STUDENT HUB
QUINN ENTRANCE AS IN/OUT FOR STUDENTS
QUESTIONS REGARDING QUANTITY OF ENTRANCES
FIELD CONNECTION DESIRED FOR CONVENIENCE





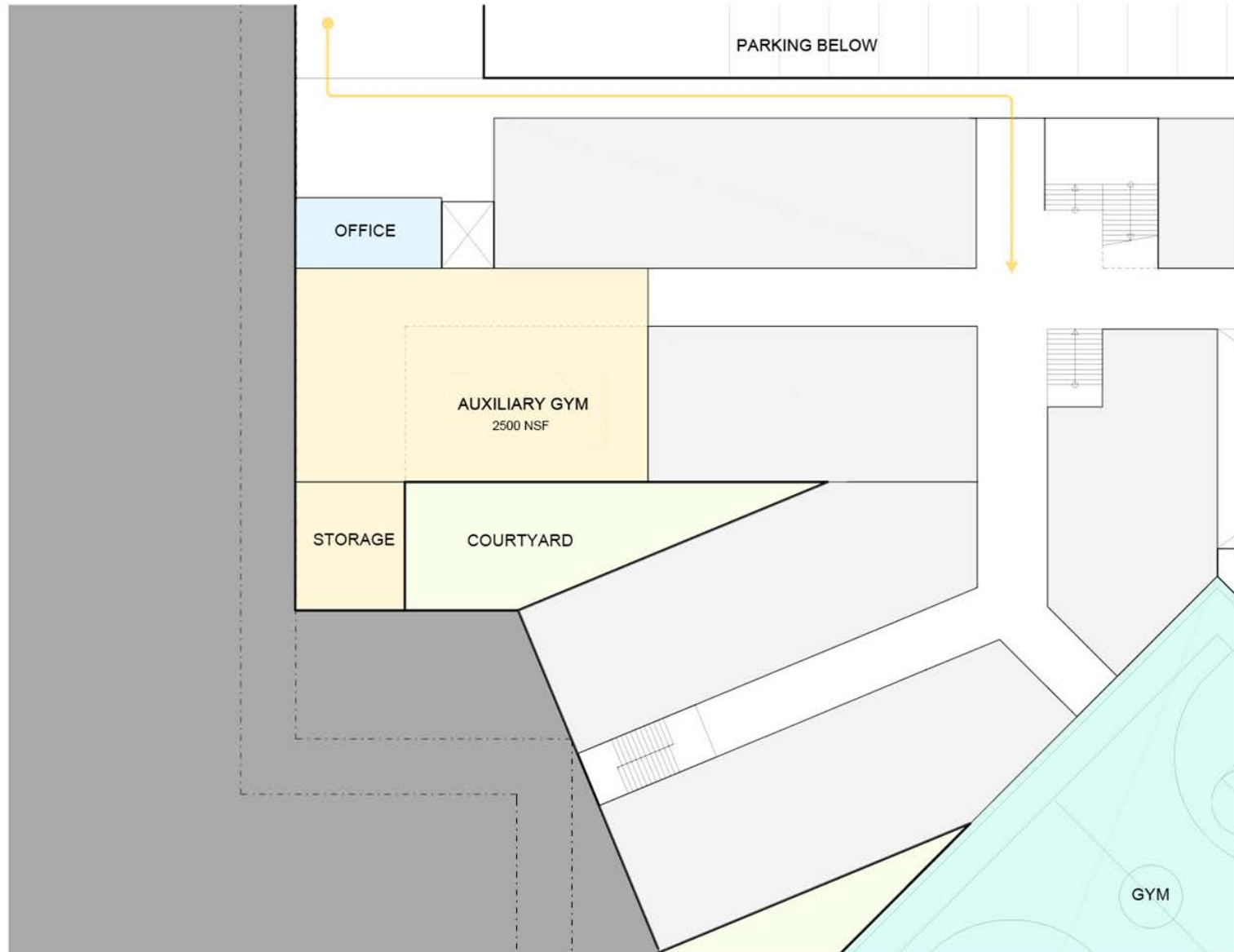
18TH STREET / BUS ENTRANCE

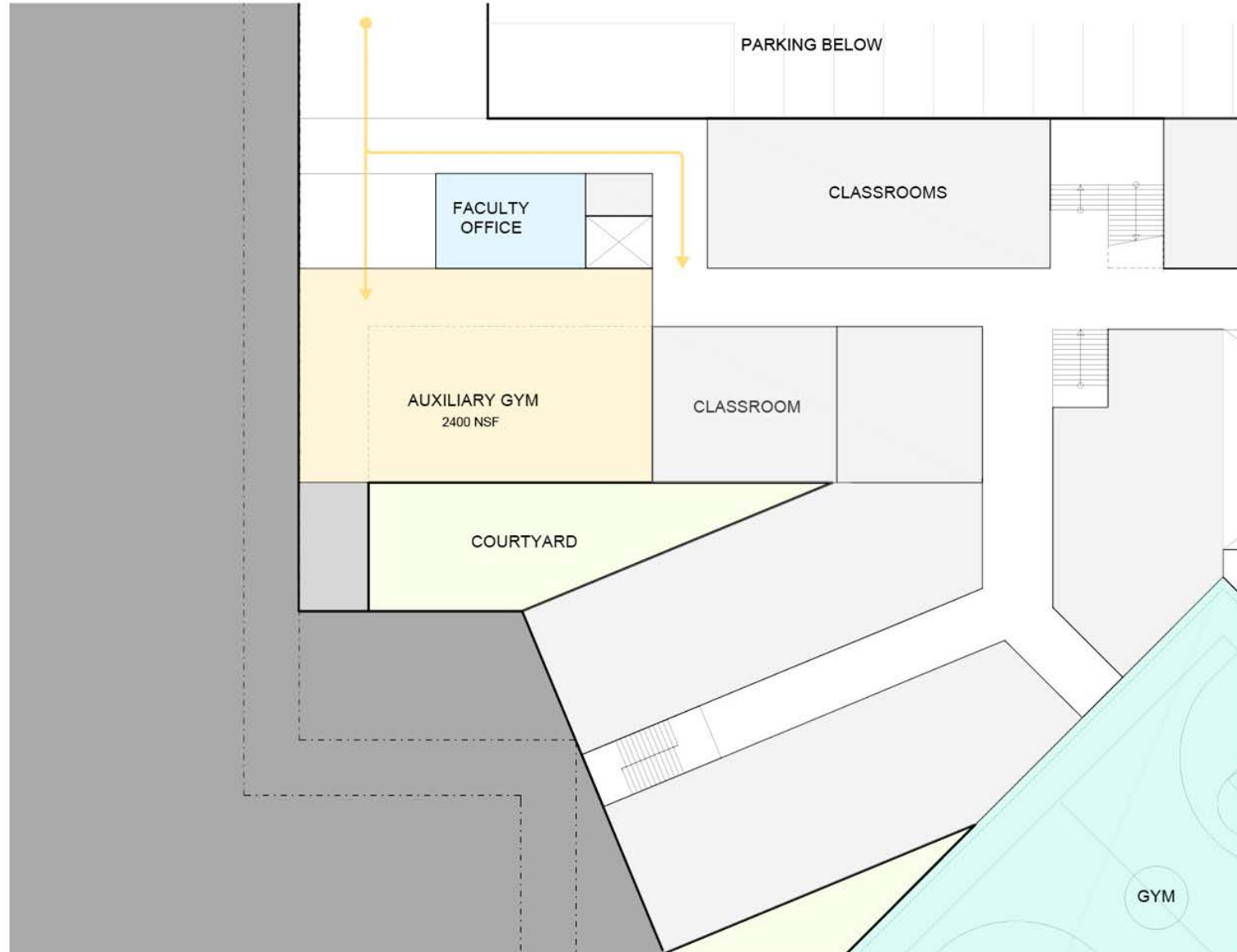




ENTRANCE PROGRAMMING OPTION 1

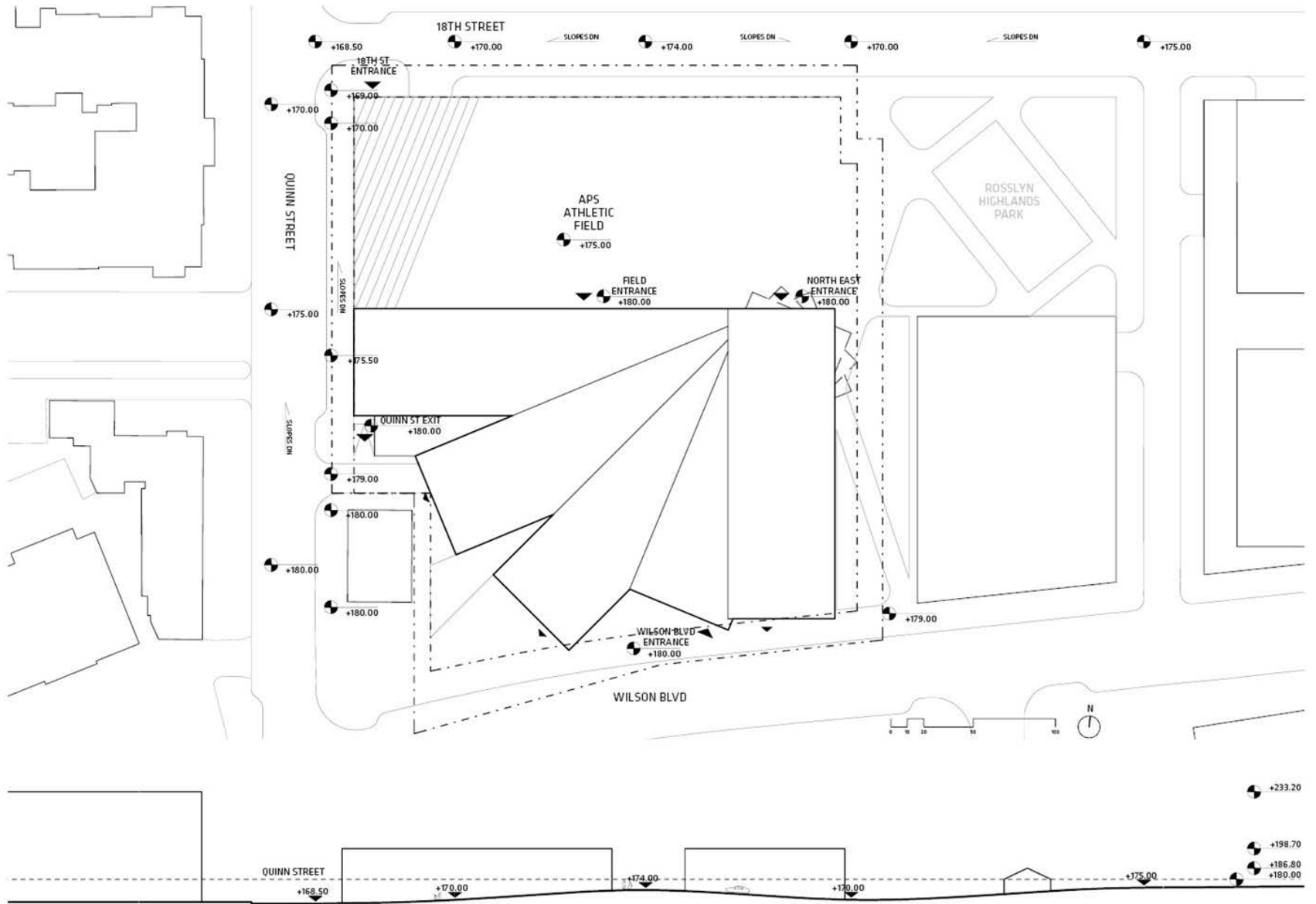
ENTRANCE STUDIES
18TH STREET / BUS ENTRANCE





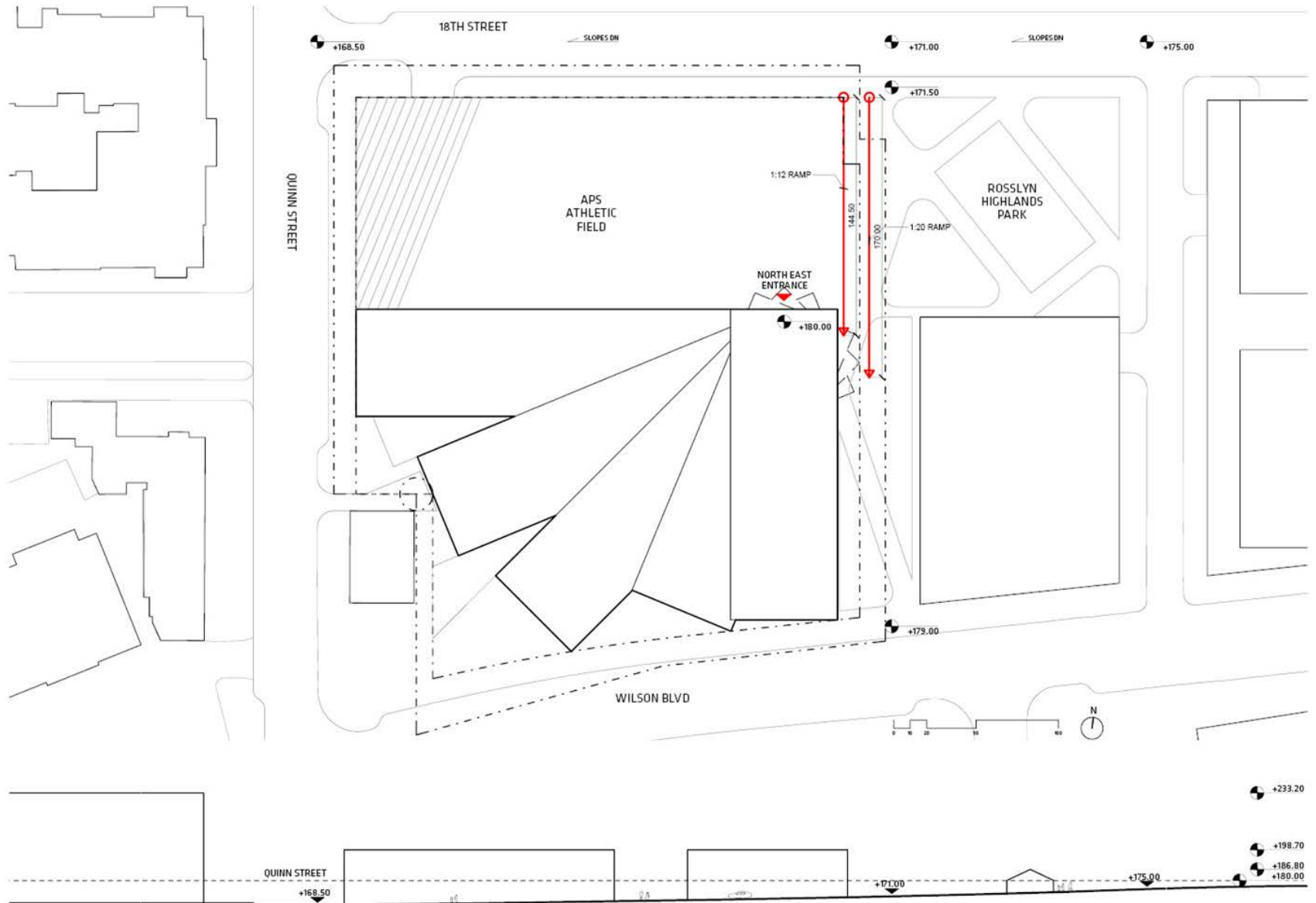
WILSON & PARK ENTRANCES

18TH STREET SLOPE - CURRENT CONDITION



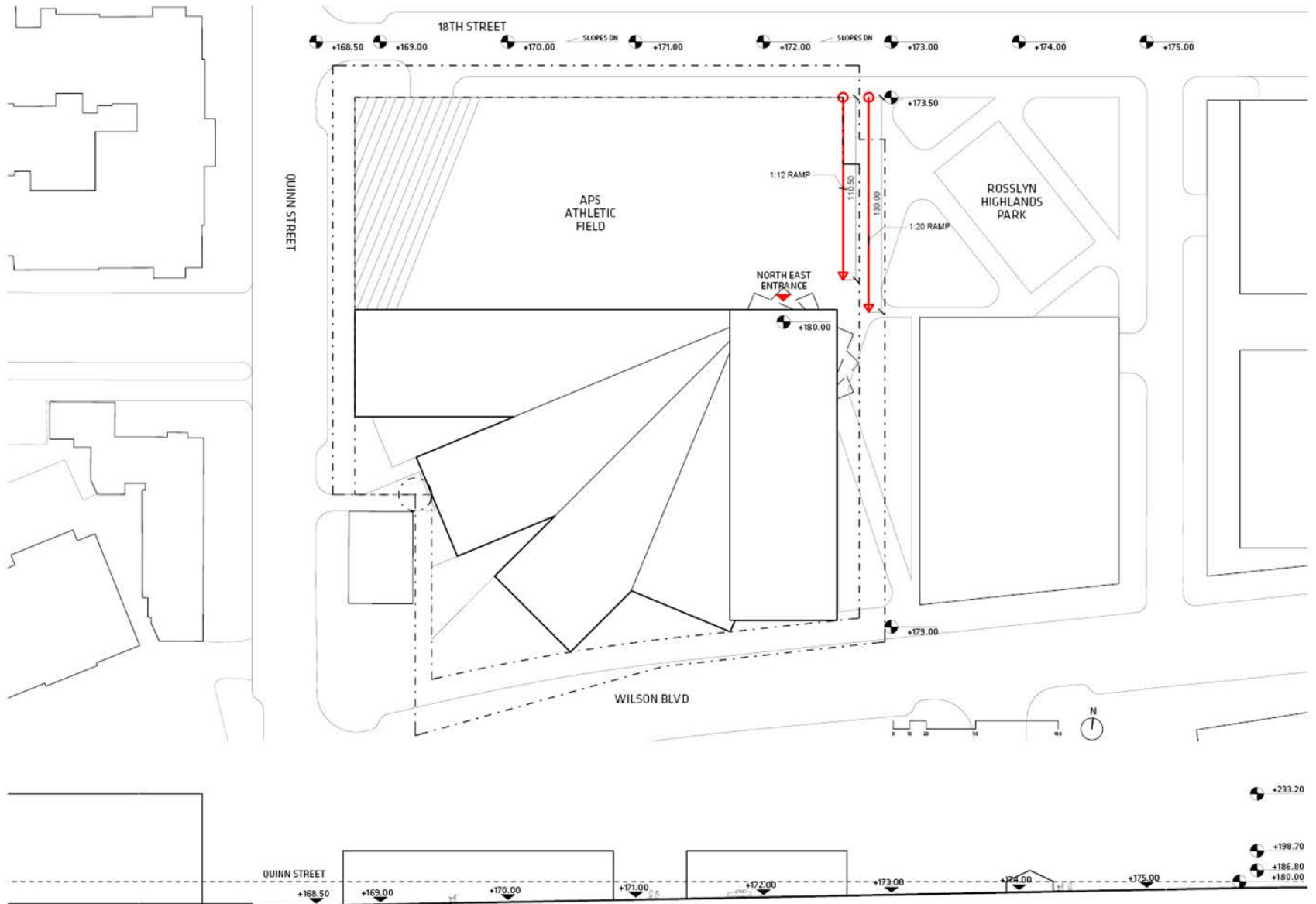
18TH STREET SLOPE - OPTION 1 - JUST REMOVING HUMP

ENTRANCE STUDIES
WILSON & PARK ENTRANCES



18TH STREET SLOPE - OPTION 2- FLATTENING ENTIRE SECTION OF STREET

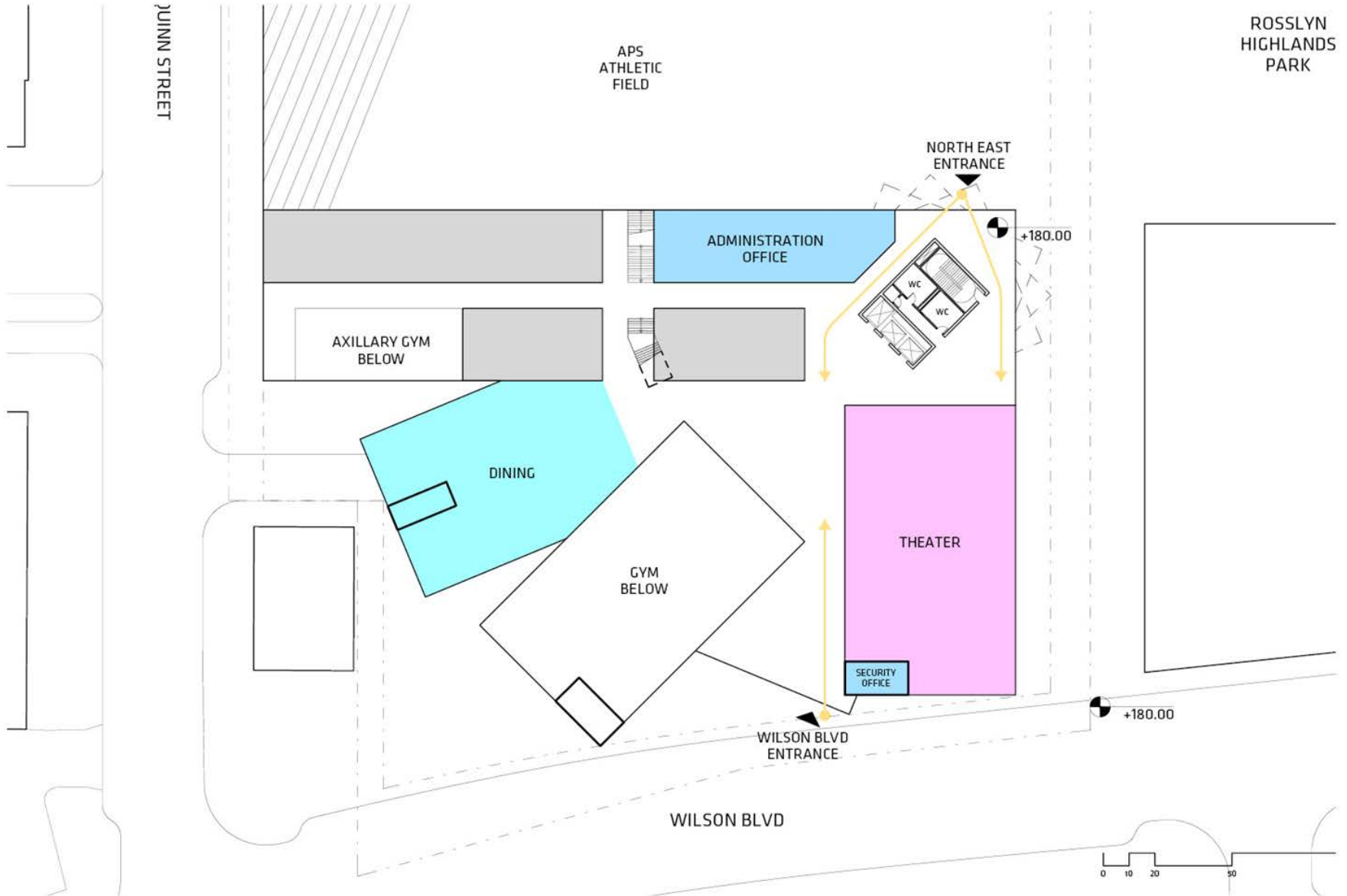
ENTRANCE STUDIES
WILSON & PARK ENTRANCES



INTERNAL PROGRAMMING OPTION 1

ENTRANCE STUDIES
WILSON & PARK ENTRANCES

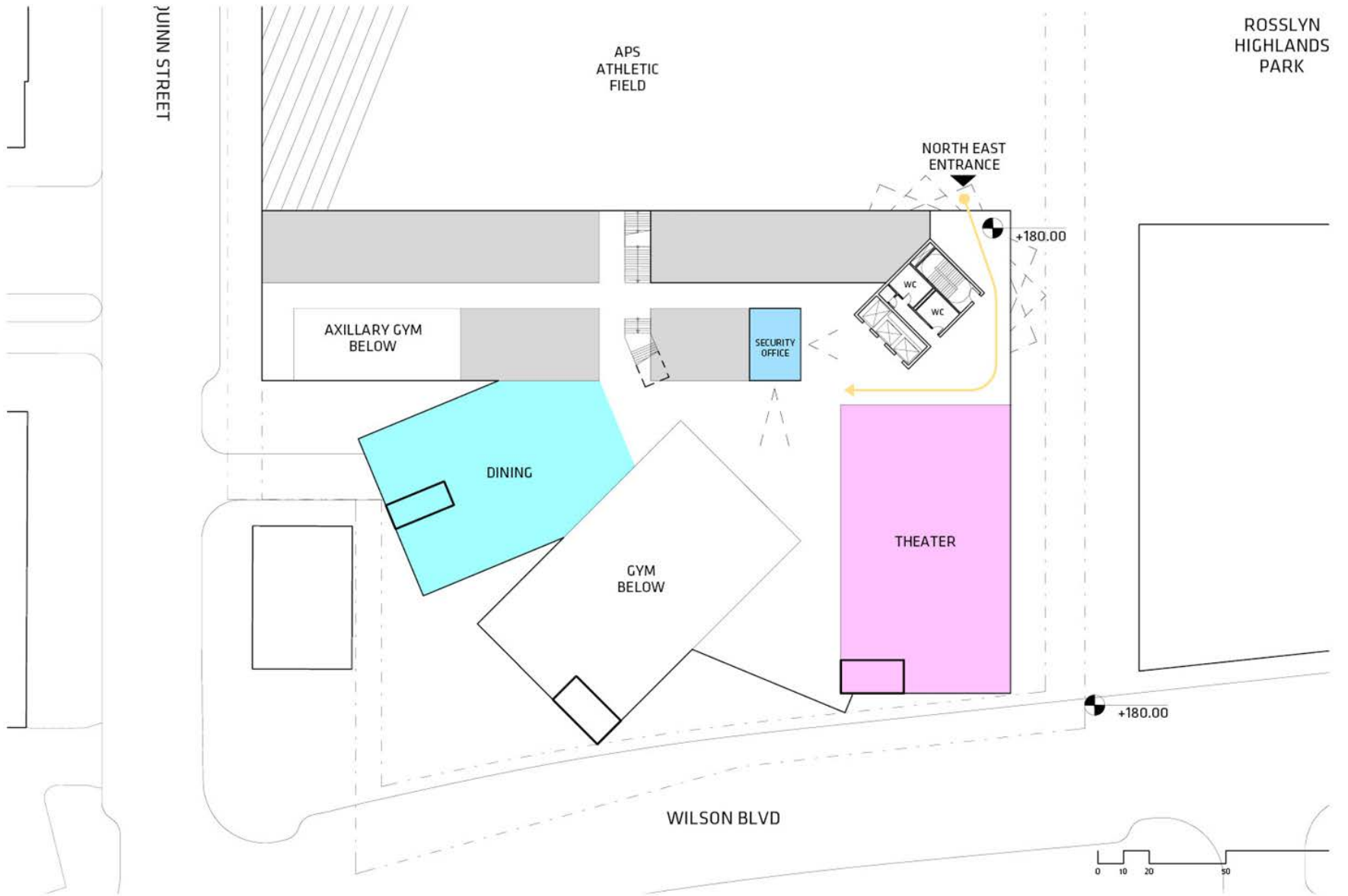
ROSSLYN
HIGHLANDS
PARK

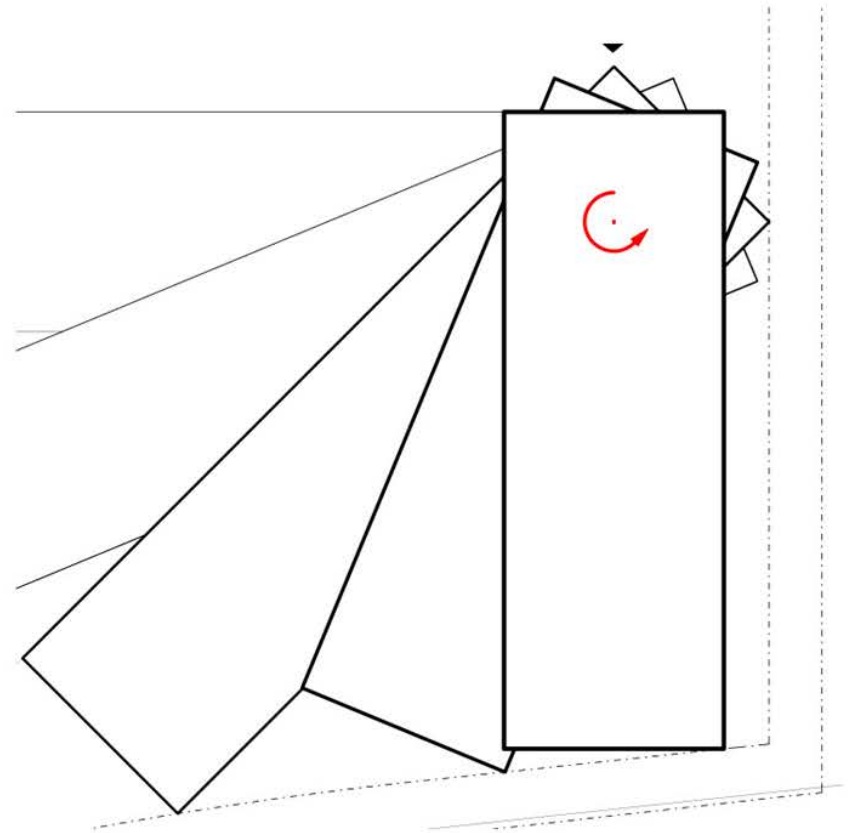
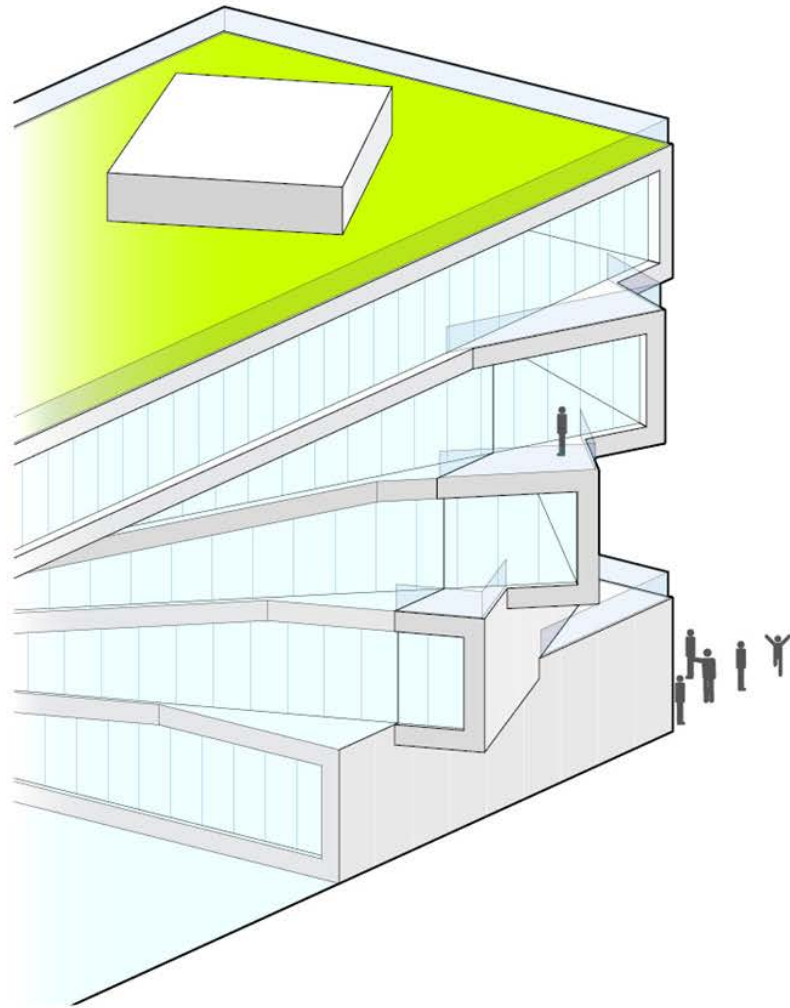


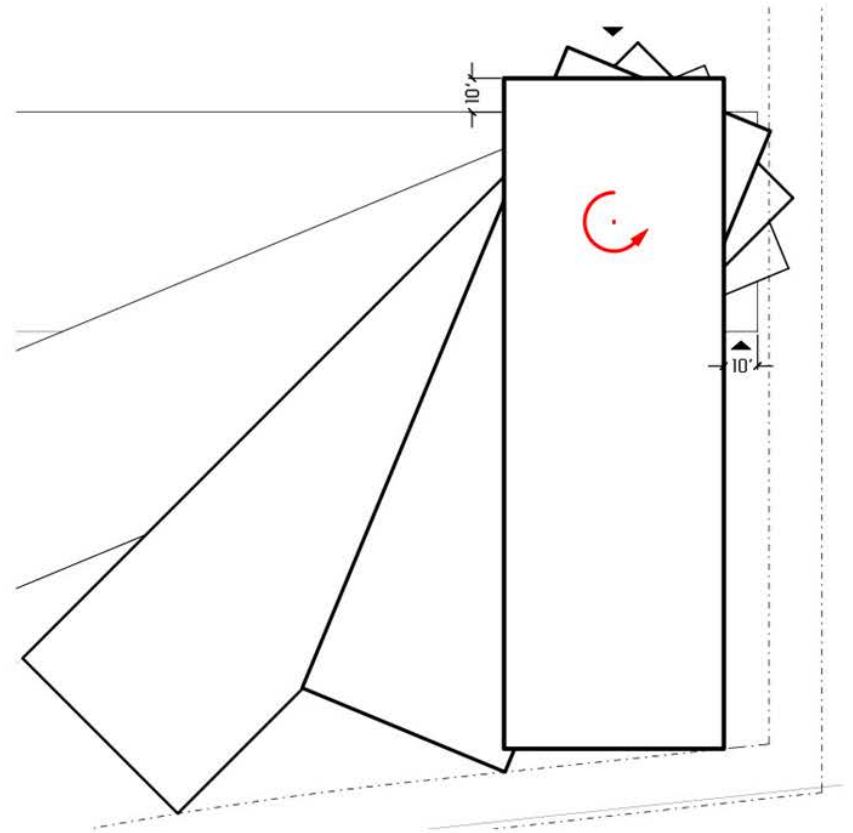
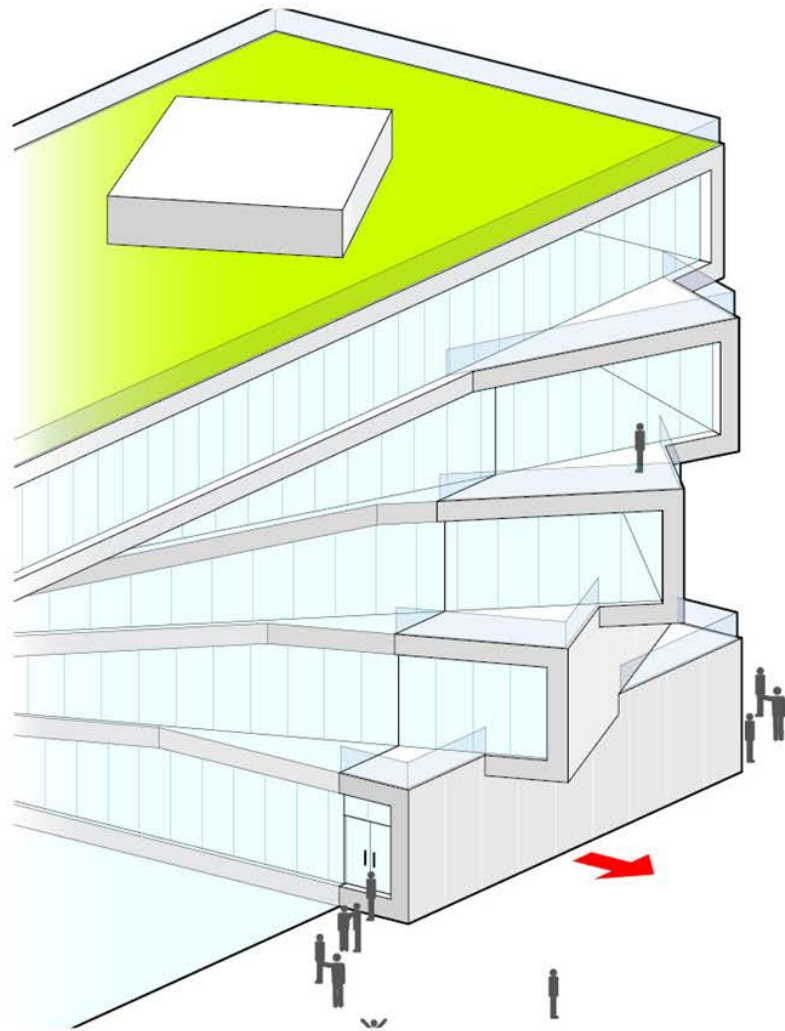
INTERNAL PROGRAMMING OPTION 2

ENTRANCE STUDIES
WILSON & PARK ENTRANCES

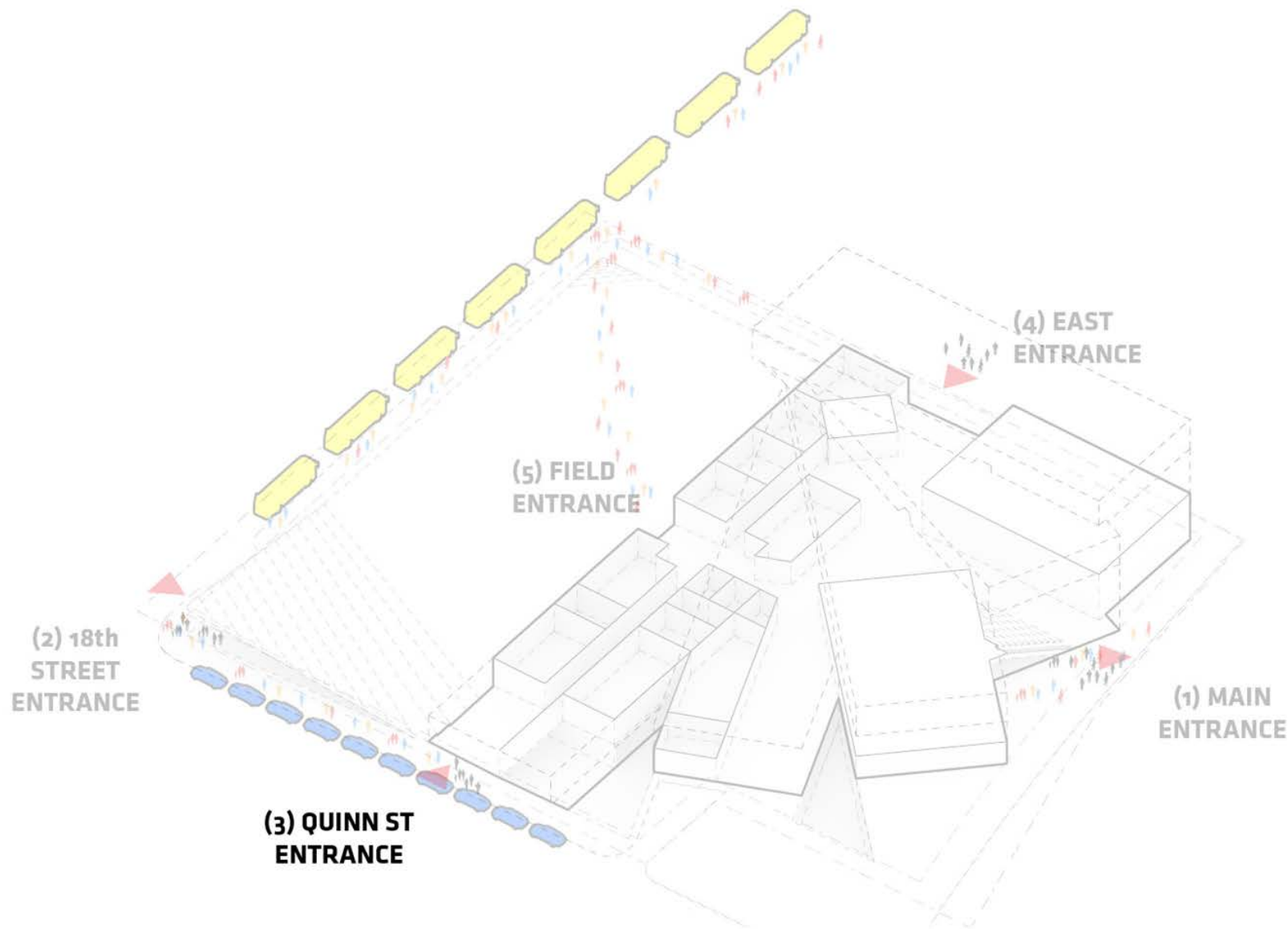
ROSSLYN
HIGHLANDS
PARK







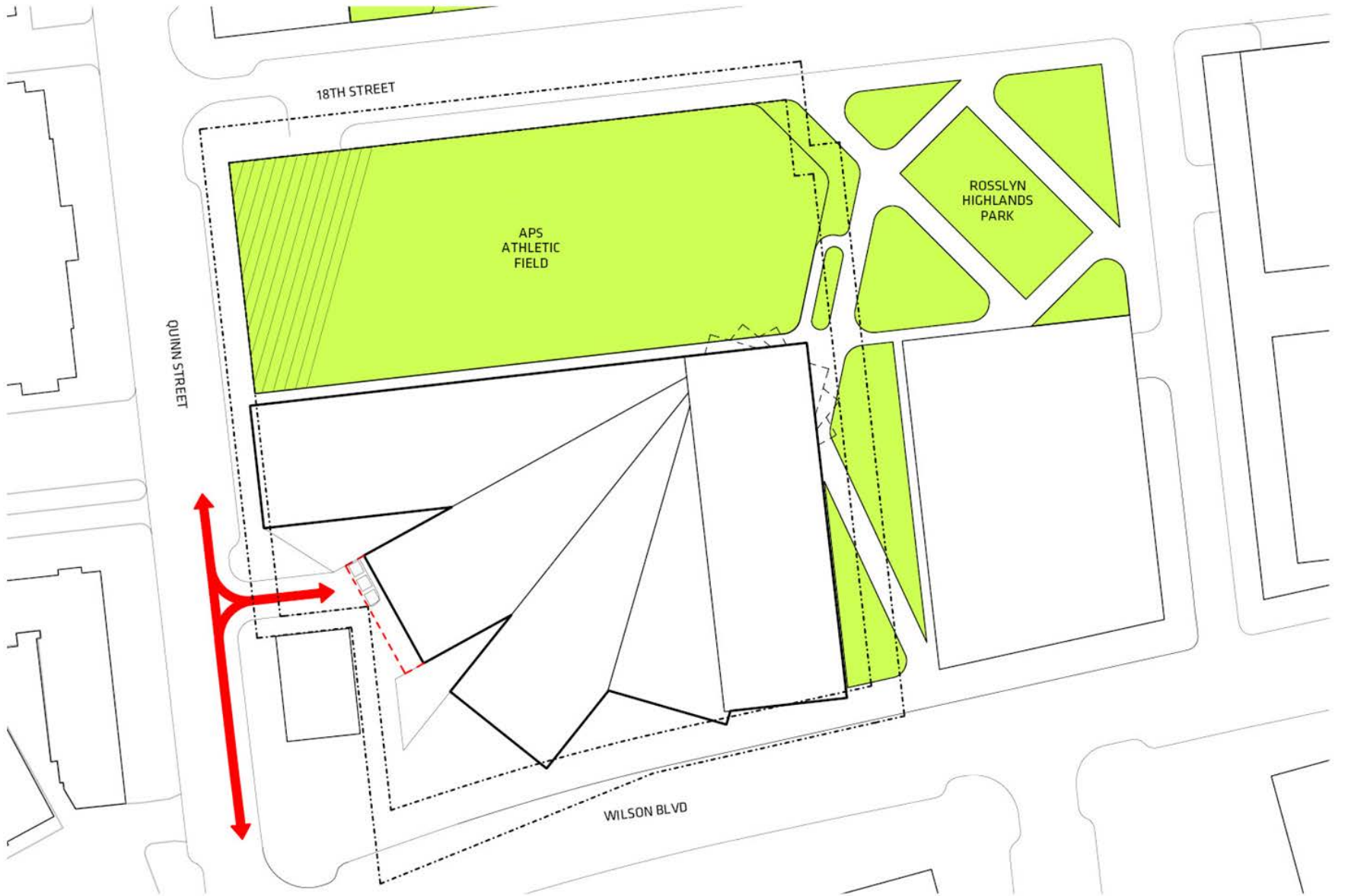
QUINN STREET ENTRY

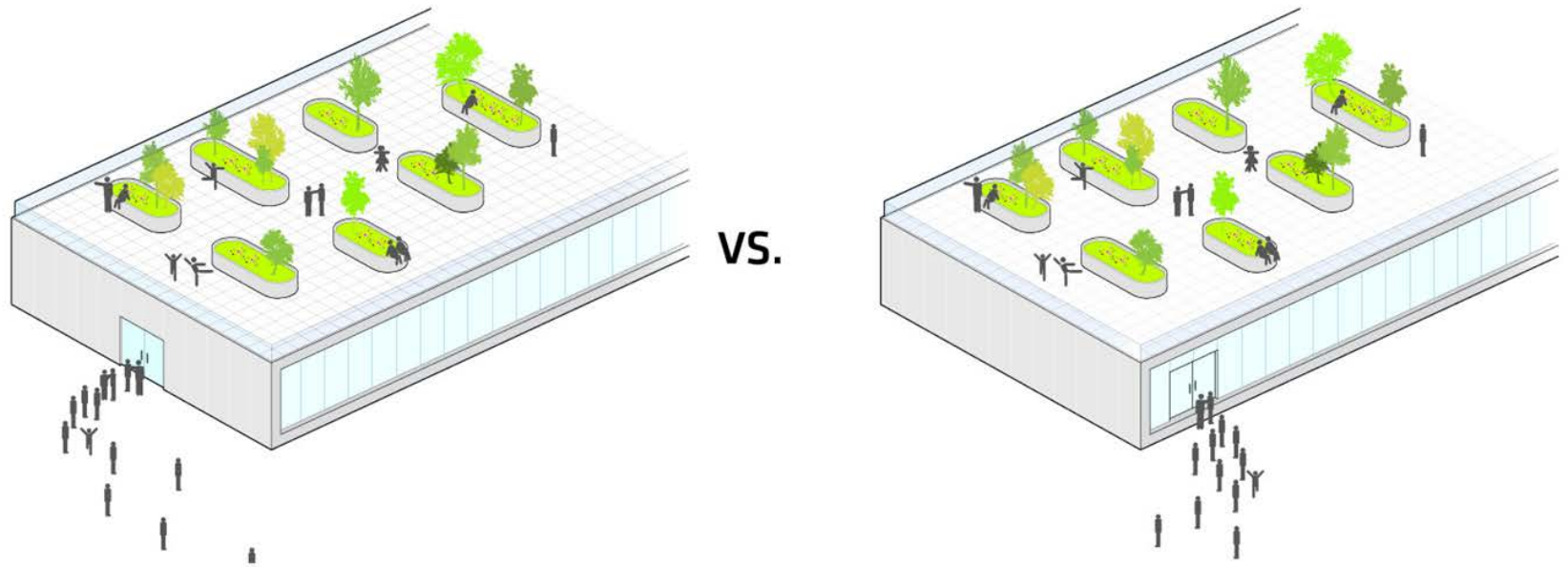


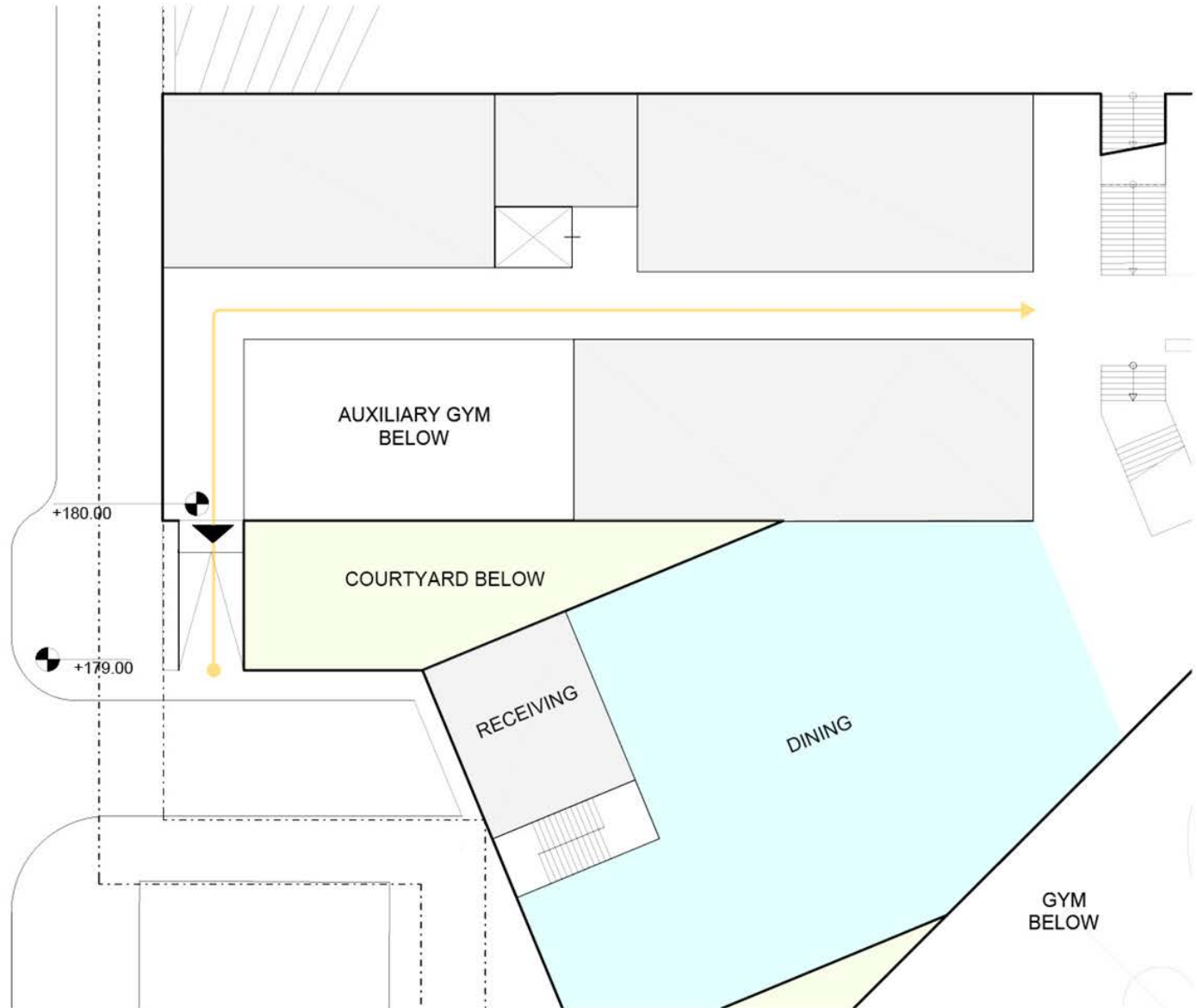


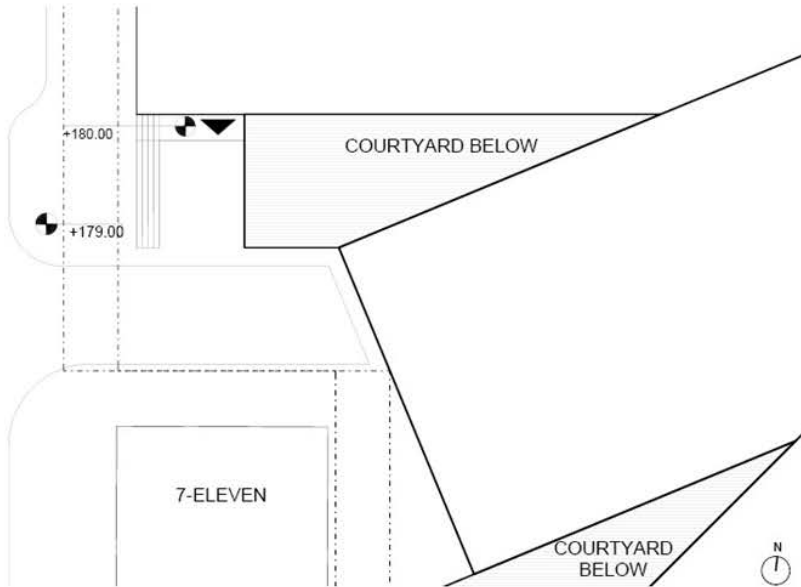
LOADING & SERVICE AREA

ENTRANCE STUDIES
QUINN STREET ENTRY



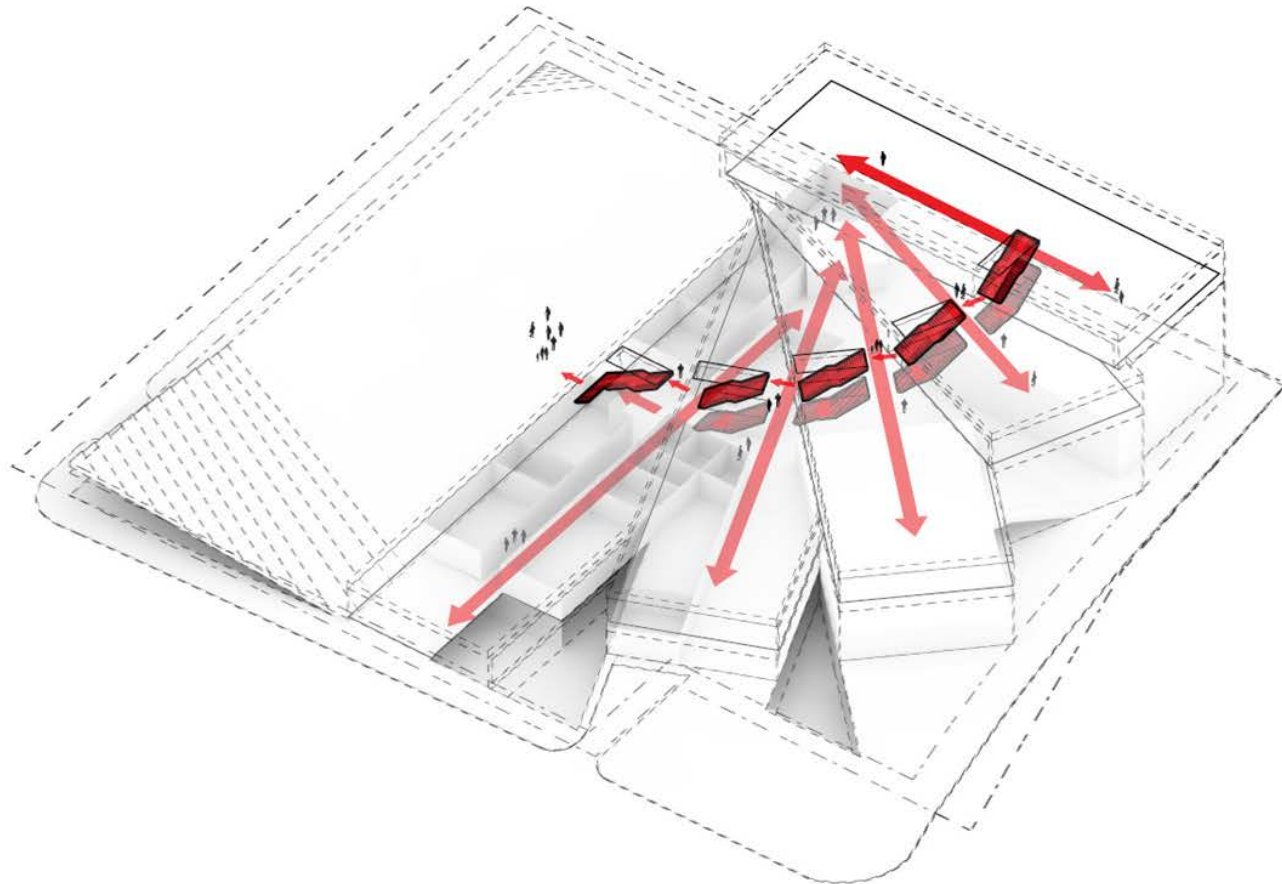






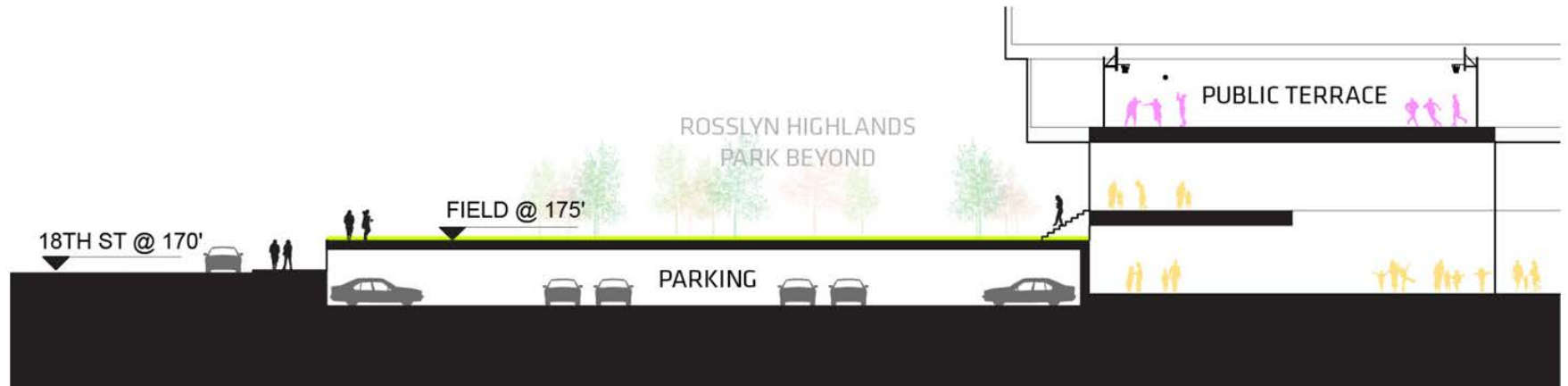


FIELD ACCESS

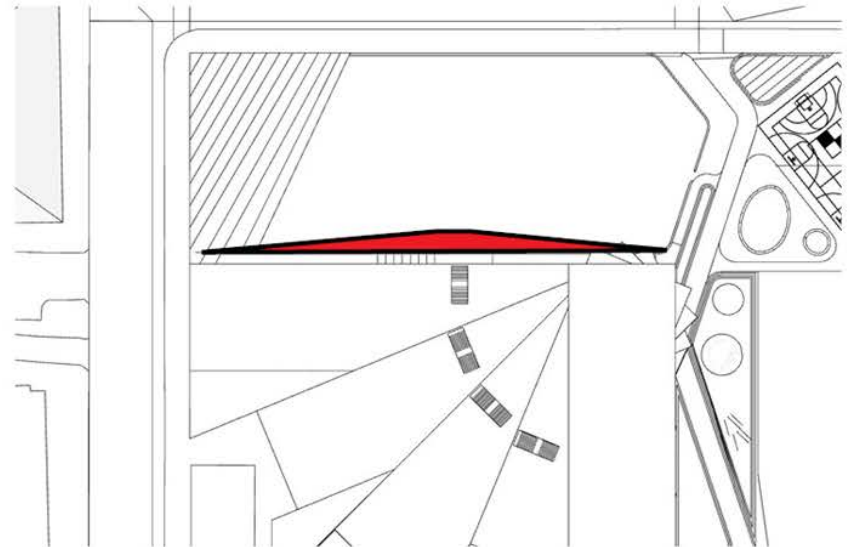
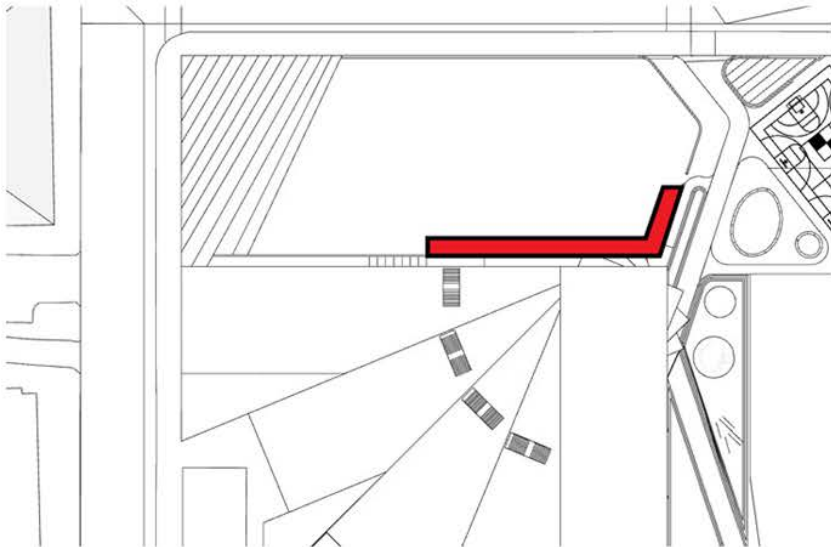
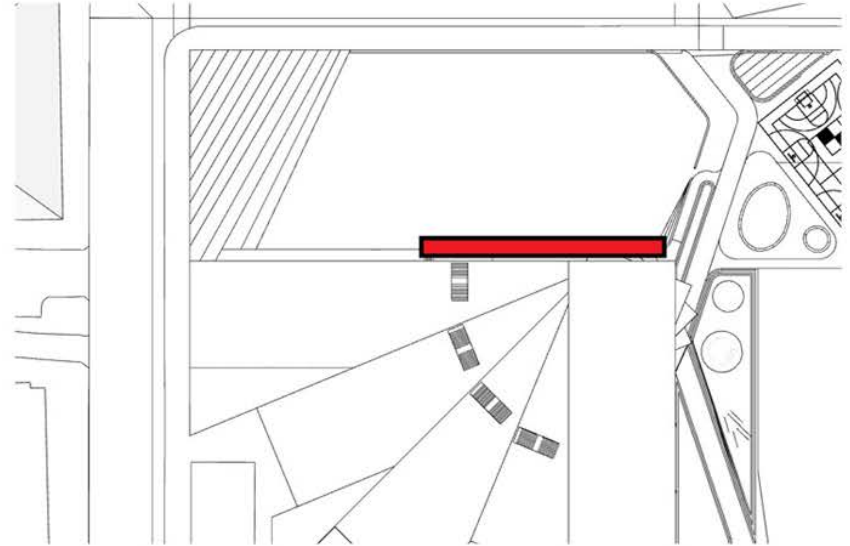
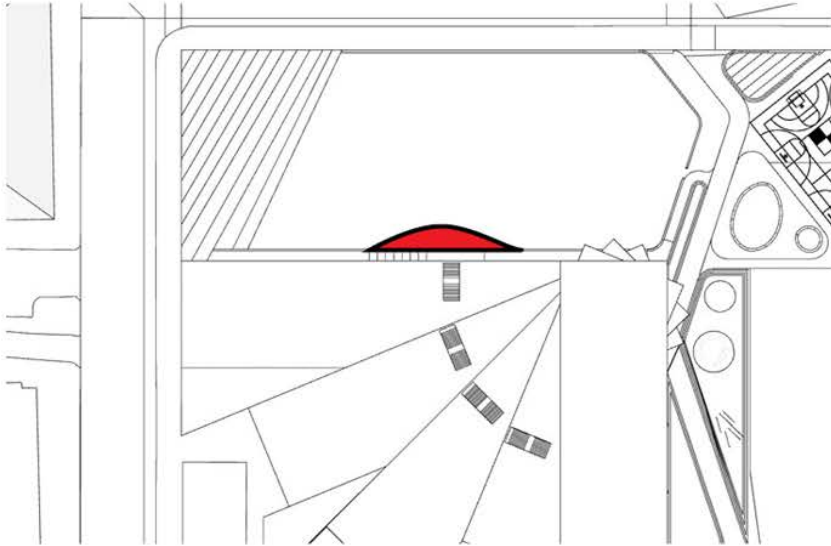


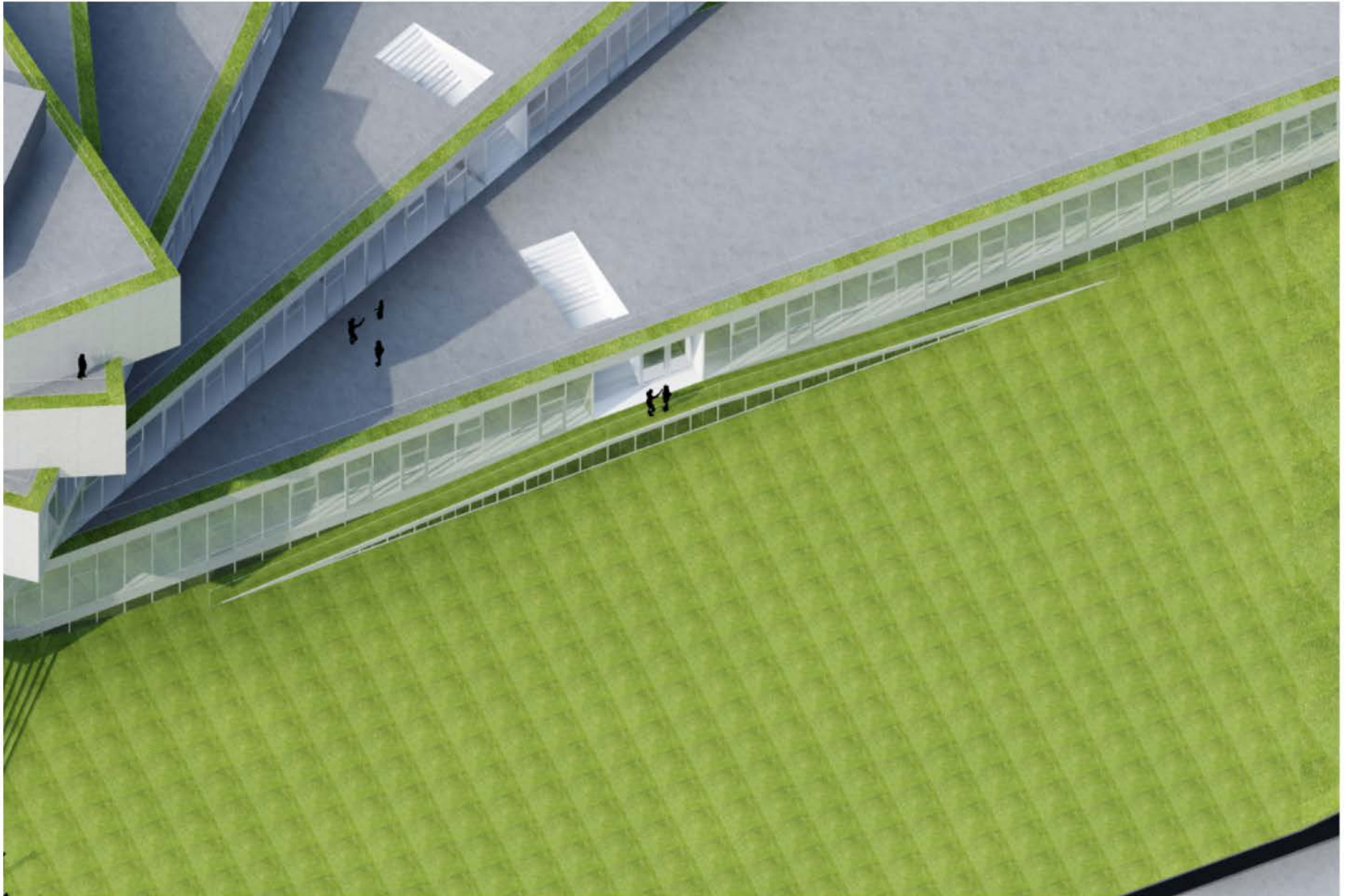
SECTIONAL RELATIONSHIP BETWEEN FIELD AND 1ST FLOOR

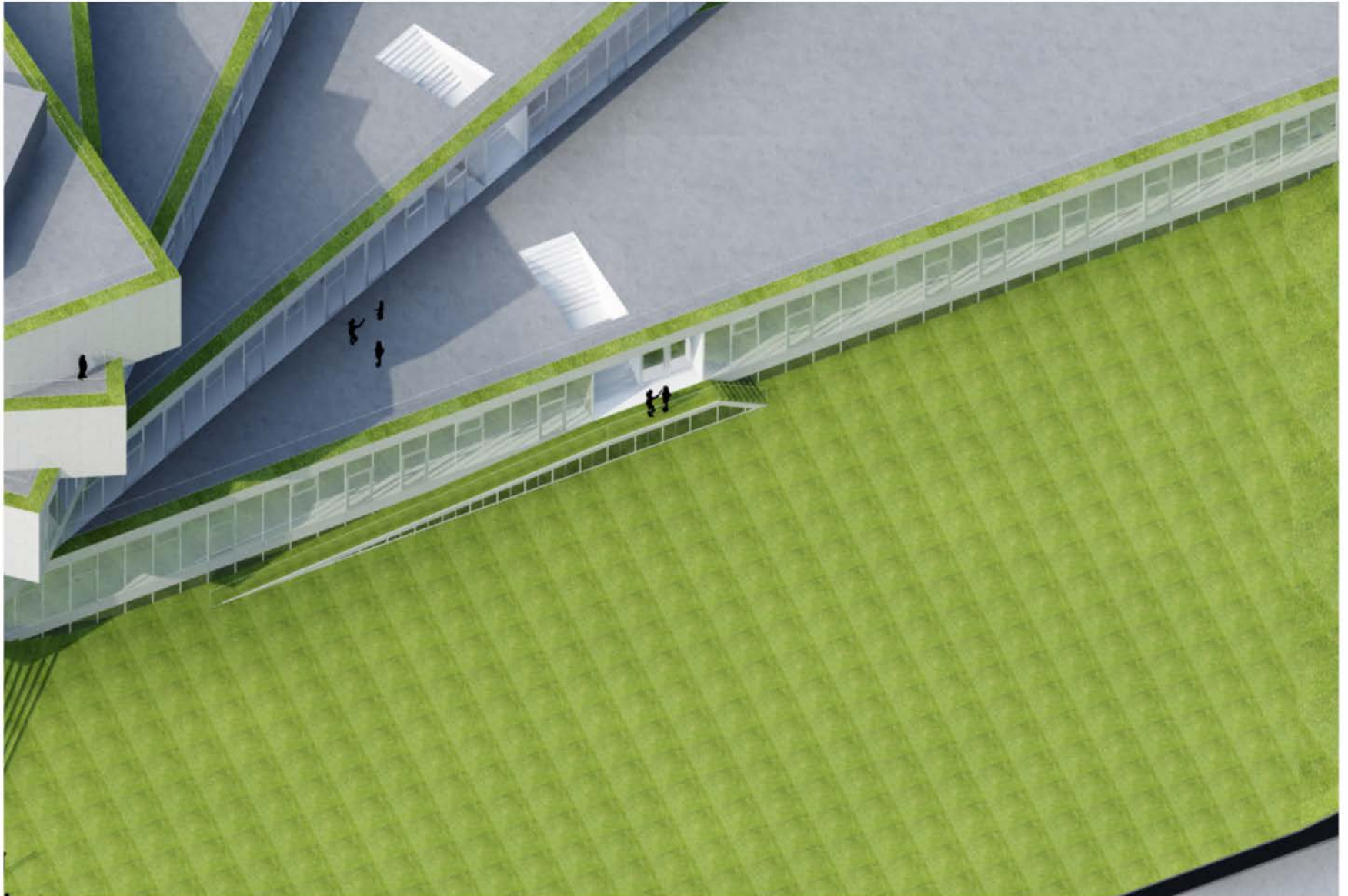
ENTRANCE STUDIES
FIELD ACCESS









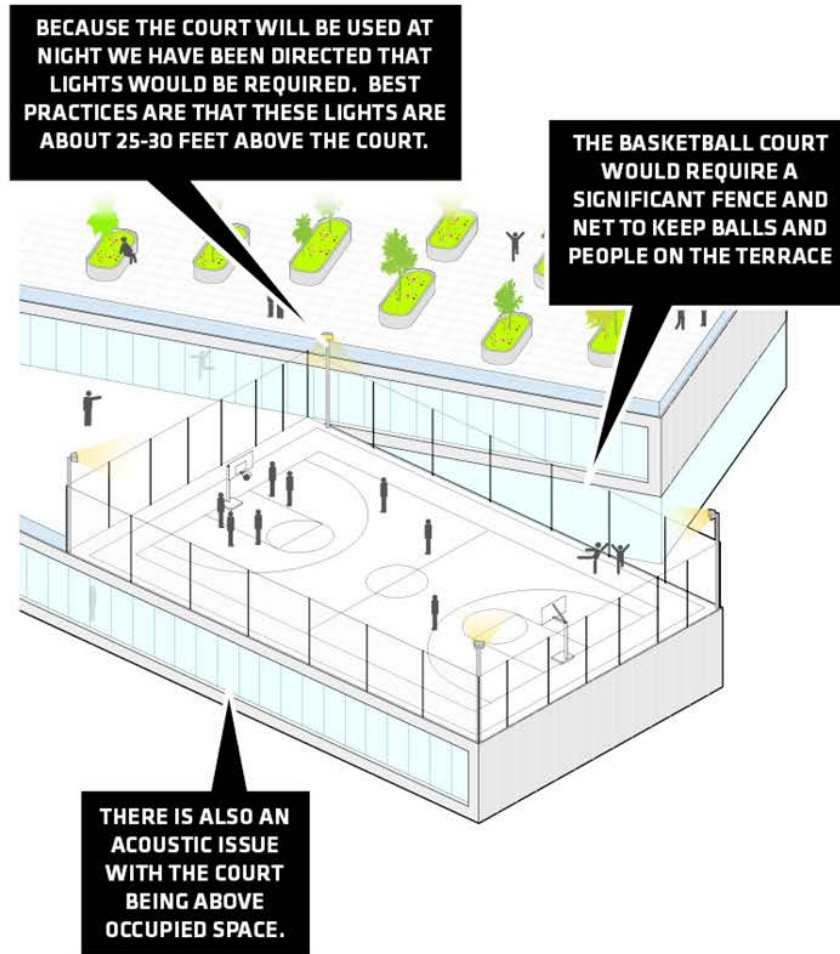


OUTDOOR PROGRAMMING OPTIONS

ROOF TERRACES

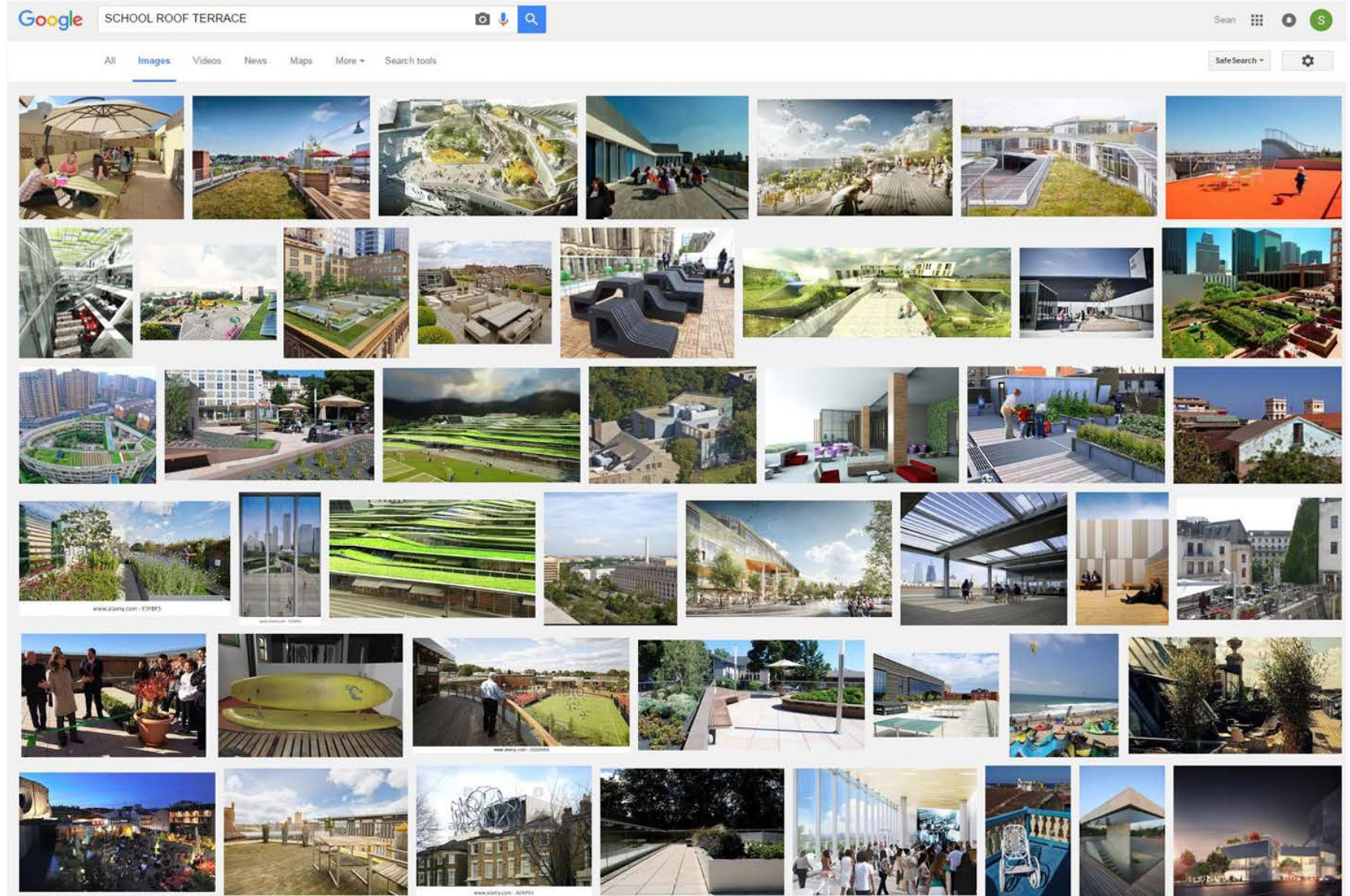


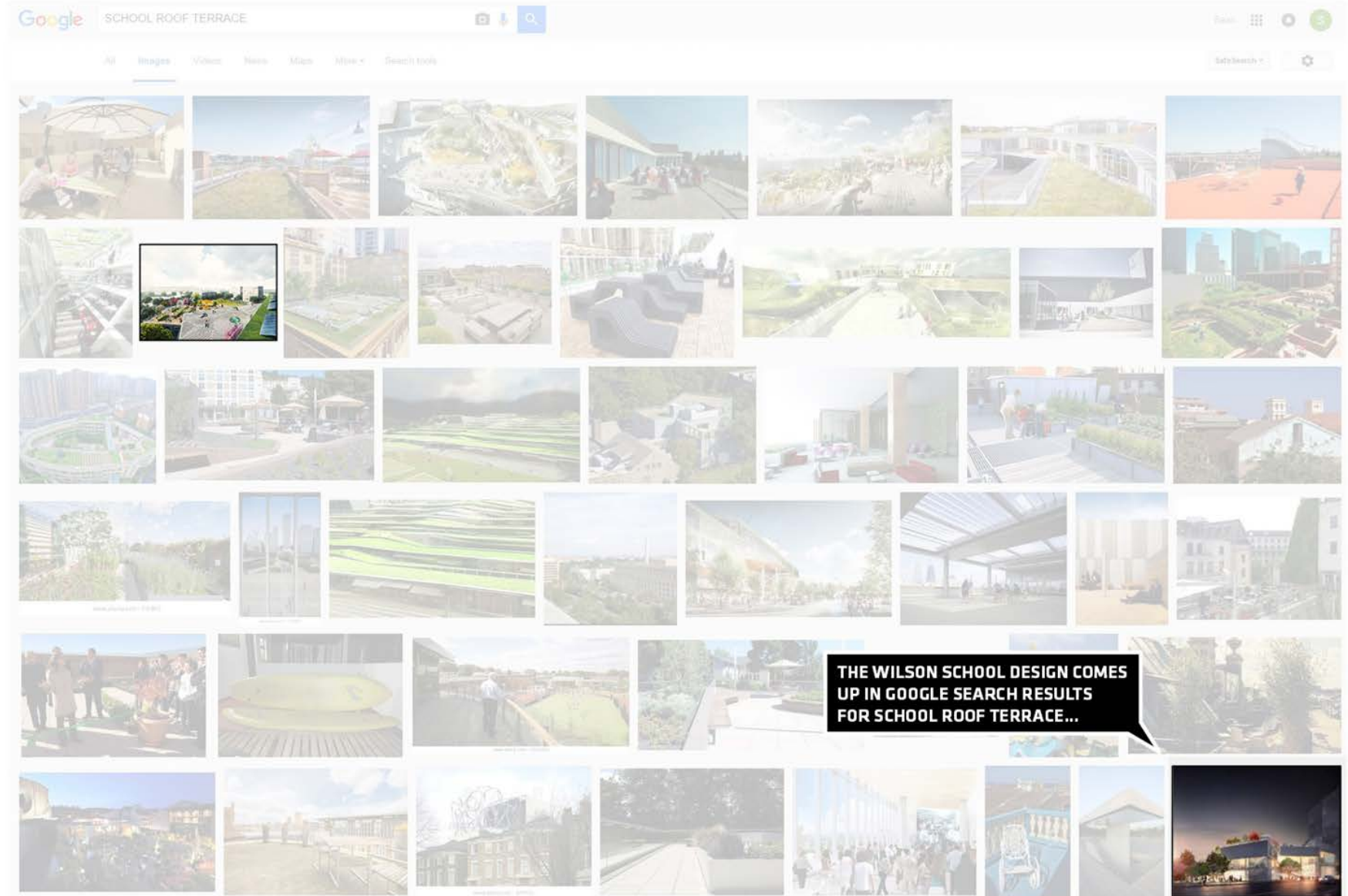
1ST LEVEL TERRACE



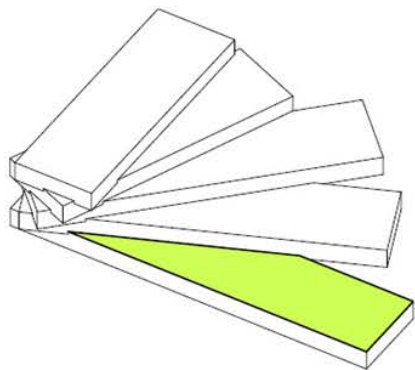
PRECEDENT SEARCH RESULTS

OUTDOOR PROGRAMMING OPTIONS ROOF TERRACES





COMMUNITY ACCESSIBLE TERRACE



Level 1 Terrace Public Active Recreation Amenity



Performance Space
London College of Fashion, UK
-Seating
-Elevated Stage



Mini-Golf
Google, Toronto, CA
-Seating
-Mini-golf course

OUTDOOR PROGRAMMING OPTIONS ROOF TERRACES



Outdoor Gym
Hailes Quarry Park Gym, Edinburgh, Scotland
-Gym equipment
-Seating



Obstacle Course
Legacy Fit Sports Complex, Miami
-Obstacle course equipment



Playground
-Swingset
-Seating
-Slides



Cinema
Skyline Cinema, Austin, TX
-Seating
-Screen



Rockclimbing
-Rock Wall

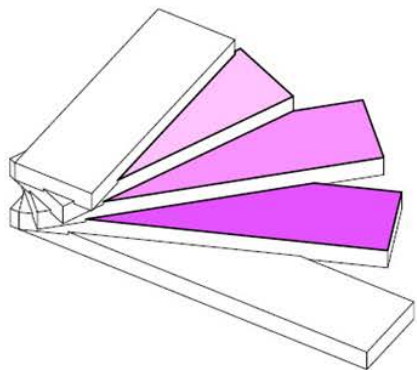


Outdoor Fitness Studio
-Fitness equipment



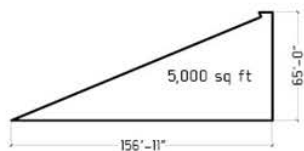
Giant Game Board

SCHOOL ACCESSIBLE TERRACES

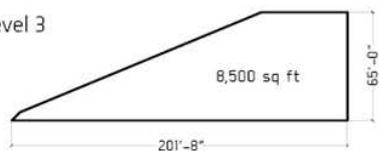


Level 2-4 Terraces School Amenities

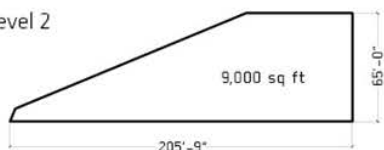
Level 4



Level 3



Level 2



Classroom
-Seating
-Desks
-Chalkboard



Library
-Shelves
-Seating
-Tables

OUTDOOR PROGRAMMING OPTIONS ROOF TERRACES



Horticulture Research Lab
University of Melbourne, AU
-Seating
-Potting stations
-Teaching Platform



Hedge Maze
-Hedges
-Seating



Study Booths
-Seating
-Tables
-Dividers



Pinup Space
-Pinup Walls
-Seating



Outdoor Art Studio
-Seating



Garden
SkyGarden, Laurie Children's Hospital, IL



Hammock Grove
Governor's Island, NYC







