

APS Multimodal Transportation & Student Safety Special Committee 2013 Report

September 26, 2013

APS School Board

Kristin Haldeman, Chair

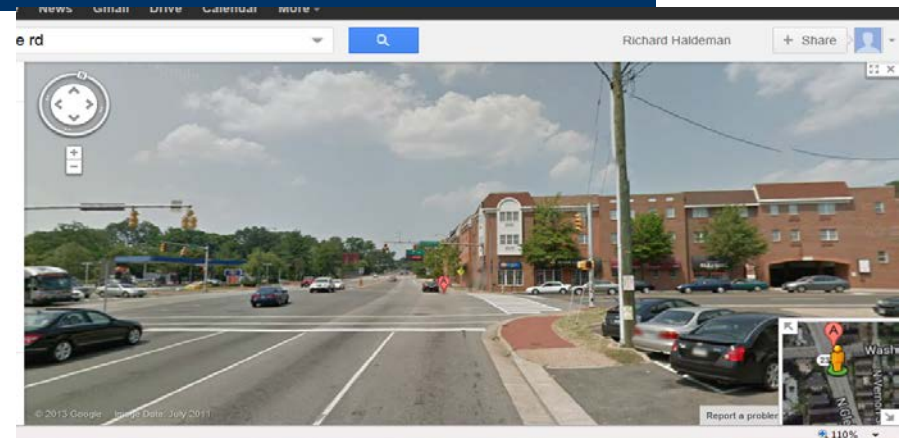


Report Summary: Six Themes

- Safety First!
- Develop a Robust TDM program
- Promote Use of School Buses
- Support & Promote Active Transport to the Max
- Improve APS Transportation Communications & Transparency
- Maximize County Collaboration

Safety First!

- Standardize criteria for evaluating walk path hazards
- Use National standards program or 3rd party with national expertise in student safety
- Conduct system-wide hazard evaluation within all school walk zones
- Develop formal process for hazard mitigation in bus eligibility process
- Collaborate with County on hazard mitigation plans.

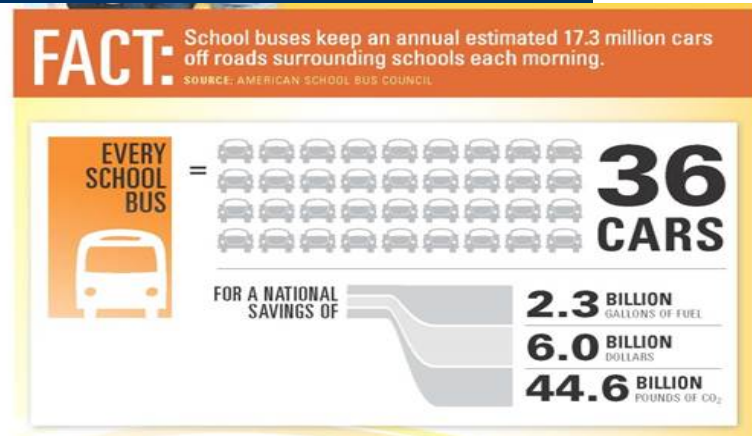


Develop Robust TDM

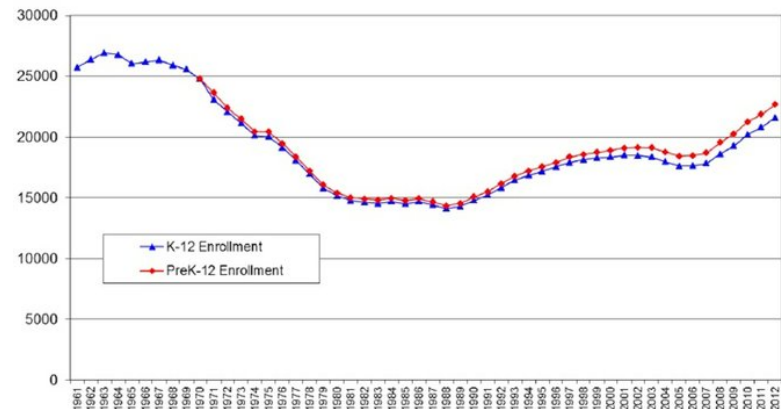
- Collect robust baseline data on mode choice and rationale
- Use data to develop school specific TDM Action plans that support full range of transportation options
- Review/revise PIP 50.1-1 to support TDM goals
- Maximize range of transportation options in school site selection and design.

Promote School Buses

- Recognize School Bus as core element of successful TDM
- Optimize Bus program
- Clarify Courtesy Busing
- Evaluate existing walk distances
- Develop long-range transportation planning capabilities
- Ensure necessary staffing in APS Transportation



Total K-12 and PreK-12 Enrollment (September 30th), 1961-2012



Support & Promote Active Transport

- Work w/ County to improve walk/bike infrastructure around schools
- Ensure global sustained effort to encourage and increase walking and biking to school
- Ensure long-term funding for SRTS Coordinator
- Develop 'school travel plans' to obtain other SRTS funds
- Assess current APS policies and infrastructure to ensure support for active transport goals
- Develop robust outreach program to promote active transportation



Communications & Transparency

- Implement Transportation-specific communications plan
- Define/establish multimodal planning map update process
- Provide clear/proactive communication on bus eligibility
- Improve transparency on bus eligibility and stop location criteria

Maximize County Collaboration

- *Ensure sufficient APS staffing*
- Transit access
- County infrastructure prioritization
- Staff coordination
- Police



NEW!

Student iRide SmarTrip Card
Makes it easier for teens
to get around

Ride ART for 75¢



Next Steps

- Outreach to APS Community
- Draft APS Transportation Philosophy
- Address additional issues within thematic areas
- Address areas of concern in other areas
- Refine recommendations to address: policy, resource and budget needs
- Provide input to TDM Study and other relevant APS-T activities