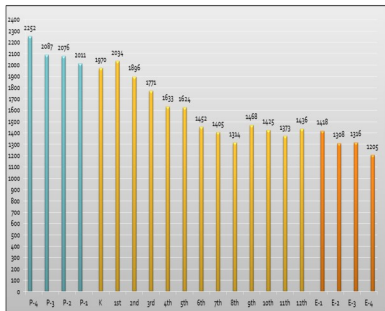


Multi-Modal Transportation Advisory Council Meeting

January 31 2013

- Enrollment growth
- CIP planning process
- 2012 CIP
- School & bus transportation data
- Changes made since 2011/2012
- Mode split at existing schools

- Enrollment is growing, 2012 CIP school data on School Bus Transportation was put together changes have been made since 2011-12.
- Transportation will use Ashlawn Elementary to serve as a model for the base line data that we will assemble on any future projects.



- The graph shows the population of the schools by grade in 2011 along with the number of students that were on the grade four years out and five years projected to come in.
- Current enrollment 2012, the official count is done at the end of September that count was 22,723 students Pre-K-12.
- The bar chart shows the projected count to be 12005 for the class of 2007/08 and 22052 coming in for class of 2025 or later.

- Projected Enrollment

- The projected student enrollment was based on the growth of 2007 student population.
- The various color lines on the graph shows the different ways of calculating the enrollment growth. The accuracy diminishes with the linear regression.
- In Arlington we mainly use the green and red lines charted on the graph. This indicates the 5 year average change it shows around 30,000 students in 2021.
- The percentage of families living in Arlington has a direct impact on the student population attending APS.

- The CIP Planning Process

- The CIP Planning Process has a 10 year capital improvement plan, which is every 2 year . The summer of 2012 the Planning Board approved by 82% the CIP.
- 2014 CIP planning will start in the spring of 2013 improvements will continue until summer of 2014.
- Future expansions of elementary schools are slated for Ashlawn -2012, Williamsburg-2014, McKinley- 2016, ATS-2016 and Kenmore- 2017.
- 253 million dollars have been allocated for improvements of other APS schools

Multi-Modal Transportation Advisory Council Meeting

January 31

2013

	<ul style="list-style-type: none"> • APS has 22 elementary schools ; 17 are neighborhood schools, 7 are regional and 2 are county wide. • APS has 6 Middles Schools, 3 of which are county wide. • APS has 5 High Schools which includes HB Woodlawn and the Career Center which brings the total of 35 buildings. 										
<ul style="list-style-type: none"> • Programs 	<ul style="list-style-type: none"> • Other programs that we transport to APS schools are not limited to general education only they include: Pre-Kindergarten VPI, Special Education, Montessori Middle IB, Arts & Technology, Immersion, Pathways High Career Center, IB, New Directions Other Field trips, late buses for academic remediation & enhancement, extra-curricular activities such as theater, athletics, interest clubs, tutoring . 										
Director of APS Transportation	<ul style="list-style-type: none"> • APS Transportation Data <table style="width: 100%; border: none;"> <tr> <td style="padding-left: 20px;">Buses in fleet</td> <td style="text-align: right;">151</td> </tr> <tr> <td style="padding-left: 20px;">Routes driven per day</td> <td style="text-align: right;">750</td> </tr> <tr> <td style="padding-left: 20px;">Miles driven per year</td> <td style="text-align: right;">600,000</td> </tr> <tr> <td style="padding-left: 20px;">Gallons of fuel consumed per year</td> <td style="text-align: right;">270,000</td> </tr> <tr> <td style="padding-left: 20px;">Students driven per day</td> <td style="text-align: right;">15,000</td> </tr> </table>	Buses in fleet	151	Routes driven per day	750	Miles driven per year	600,000	Gallons of fuel consumed per year	270,000	Students driven per day	15,000
Buses in fleet	151										
Routes driven per day	750										
Miles driven per year	600,000										
Gallons of fuel consumed per year	270,000										
Students driven per day	15,000										
Director of APS Transportation <ul style="list-style-type: none"> • EDULOG Software • GPS Cost analysis 	<ul style="list-style-type: none"> • 2011-12 changes consist of new routing software EDULOG this software has enable us to route and assign buses for students to their prospective schools . • Use of E-School registration to implement student information. • GPS routing-software: at the present time we are looking at 4 different companies, we would like for them to provide us with a 90 day sample of their product. Once we have reviewed their product we will determine which best suits our needs. 										

Multi-Modal Transportation Advisory Council Meeting

January 31

2013

<p>Director of APS Transportation and ART Representative</p> <ul style="list-style-type: none"> • GPS (continued) • Budget 	<ul style="list-style-type: none"> • Exchange of information/ideas from ART on real time, Apps for cost effectiveness and efficiency with the use of GPS. • At the end of February 2013 the board will receive a budget from the superintendent at that time budget cuts will be made. Suggestions of requisitions should be made to the superintendent before hand so that they will be included in the budgetary process.
<p>Director of APS Transportation</p> <ul style="list-style-type: none"> • Reorganization • Courtesy Bussing • Scanners 	<ul style="list-style-type: none"> • Transportation has recently began reorganization to become more efficient . • Courtesy Bussing allows students who are in a walk zone the opportunity to ride on a scheduled bus/route if there is available space. The student will be deemed a rider and placed on the route after all information has been reviewed. • Eligibility and Bus Capacity • 6 scanners are currently being used to collect data.
<p>Director of APS Transportation</p> <ul style="list-style-type: none"> • Fleet size 	<ul style="list-style-type: none"> • Increase of fleet size by 10 new buses • Bus ridership use is 92% AM/PM
<ul style="list-style-type: none"> • Mode Split Analysis • Traffic 	<ul style="list-style-type: none"> • Mode Split Analysis was based on several types of transportation: mass transit, car pool, family vehicle, school bus, walk, bike, and other to determine the AM/PM total trips. • Mode Splits Analysis were based on 5 schools Williamsburg MS, Jamestown ES, Nottingham ES, Tuckahoe ES and Ashlawn ES. • The traffic patterns have changed due to construction, more vehicles on the road, an influx of pedestrian/bicycle travelers and on street parking. • Reducing traffic at the schools is a primary goal. • Active Transportation National Program -CDC. • Meeting the needs of our community. • Transportation and Safety. • Environmental impact /land use/School locations.

Multi-Modal Transportation Advisory Council Meeting

January 31 2013

- Government Framework

- Purpose, membership, operation procedures
- School board advisory council, special committees and sub committee.
- Review and disseminate information.
- Budget Advisory Council, Special Needs Advisory Council, Facilities Advisory Councils
- Appointment of Chair and Vice Chair and duties and responsibility.
- Allowing community input on issues.
- Organizing communication
- Representatives from concern groups.
- Priorities
- Meetings will be held on second and fourth Thursdays