

APS Multimodal Transportation & Student Safety Special Committee 2013 Report

September 19, 2013

APS School Board Work Session

Kristin Haldeman, Chair

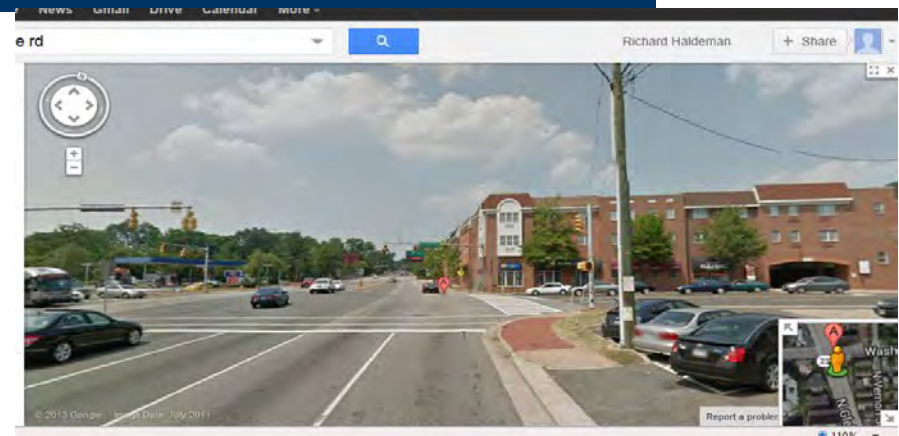


Report Summary: Six Themes

- Safety First!
- Develop a Robust TDM program
- Promote Use of School Buses
- Support & Promote Active Transport to the Max
- Improve APS Transportation Communications & Transparency
- Maximize County Collaboration

Safety First!

- Standardize criteria for evaluating walk path hazards
- Use National standards program or 3rd party with national expertise in student safety
- Conduct system-wide hazard evaluation within all school walk zones
- Develop formal process for hazard mitigation in bus eligibility process
- Collaborate with County on hazard mitigation plans.

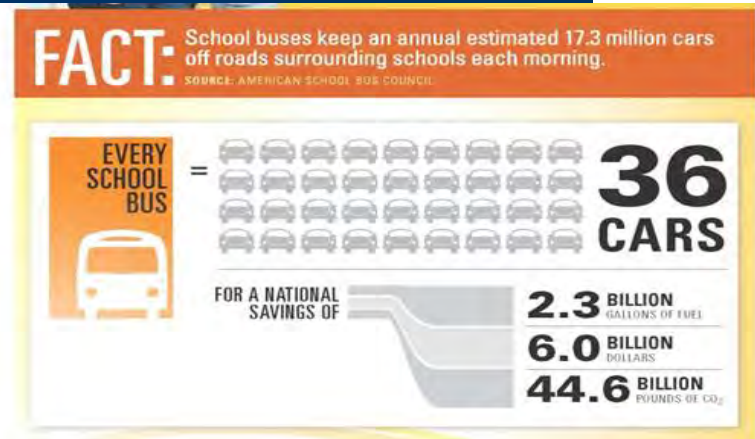


Develop Robust TDM

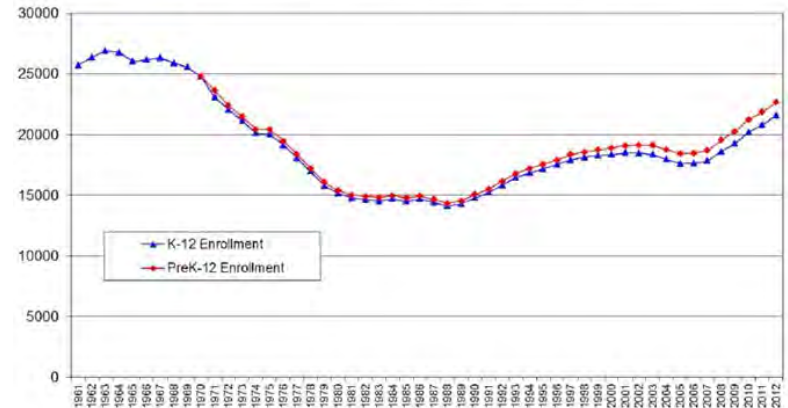
- Collect robust baseline data on mode choice and rationale
- Use data to develop school specific TDM Action plans that support full range of transportation options
- Review/revise PIP 50.1-1 to support TDM goals
- Maximize range of transportation options in school site selection and design.

Promote School Buses

- Recognize School Bus as key element of successful TDM
- Optimize Bus program
- Clarify Courtesy Busing
- Evaluate existing walk distances
- Develop long-range transportation planning capabilities
- Ensure necessary staffing in APS Transportation



Total K-12 and PreK-12 Enrollment (September 30th), 1961-2012



Support & Promote Active Transport

- Work w/ County to improve walk/bike infrastructure around schools
- Ensure global sustained effort to encourage and increase walking and biking to school
- Ensure long-term funding for SRTS Coordinator
- Develop 'school travel plans' to obtain other SRTS funds
- Assess current APS policies and infrastructure to ensure support for active transport goals
- Develop robust outreach program to promote active transportation



Communications & Transparency

- Implement Transportation-specific communications plan
- Define/establish multimodal planning map update process
- Provide clear/proactive communication on bus eligibility
- Improve transparency on bus eligibility and stop location criteria

Maximize County Collaboration

- Transit access
- County infrastructure prioritization
- Staff coordination
- Police



NEW!

Student iRide SmarTrip Card
Makes it easier for teens
to get around

Ride ART for 75¢

M SmartTrip **ART** arlington transit **iRIDE**

A promotional graphic for the Student iRide SmarTrip Card. It features four illustrations of different bus models. The text highlights that the card makes it easier for teens to get around and that they can ride ART for 75¢. Logos for SmartTrip, ART (Arlington Transit), and iRide are displayed at the bottom.

Next Steps

- Outreach to APS Community
- Draft APS Transportation Philosophy
- Address additional issues within thematic areas
- Address areas of concern in other areas
- Refine recommendations to address: policy, resource and budget needs
- Provide input to TDM Study and other relevant APS-T activities