

EDUCATION CENTER REUSE

David M. Brown Planetarium
A 1426 North Quincy Street

ARLINGTON PUBLIC SCHOOLS

1426 N QUINCY ST

BLPC / PFRC JOINT KICK-OFF MEETING

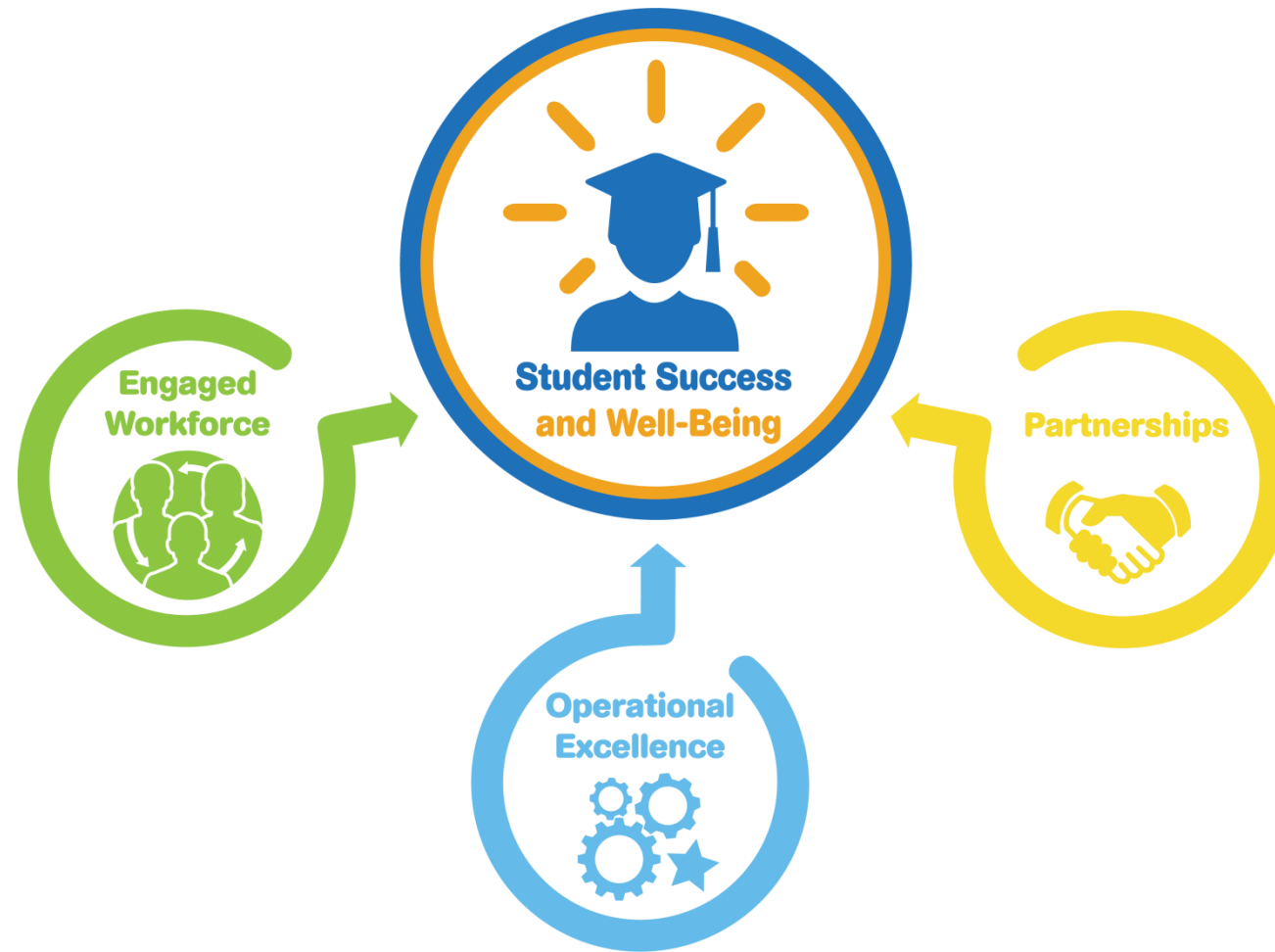
BUILDING LEVEL PLANNING COMMITTEE
PUBLIC FACILITIES REVIEW COMMITTEE

- 1) Welcome
- 2) Introductions – Part 1: Staff
- 3) Role of PFRC / BLPC
- 4) Introductions – Part 2: Committee Members
- 5) Project Overview
- 6) Public Comment
- 7) Next Steps & Adjourn

A woman with long, wavy blonde hair, wearing a white lace top and a lanyard, is smiling warmly at a young child with curly hair. They are seated at a table with a TruMoo chocolate gelatin dessert and a can of 100% Orange Juice. The background shows other people seated at tables, suggesting a social gathering or event. The entire image has a warm, orange-toned overlay.

1 Welcome

APS 2018-2024 Strategic Plan



WELCOME

Project Goals

- Safety + Security
- Adaptability + Agility
- High Performance Learning Environments
- Universal Design
- Adherence to Budget
- Sustainability



WELCOME

Project Parameters

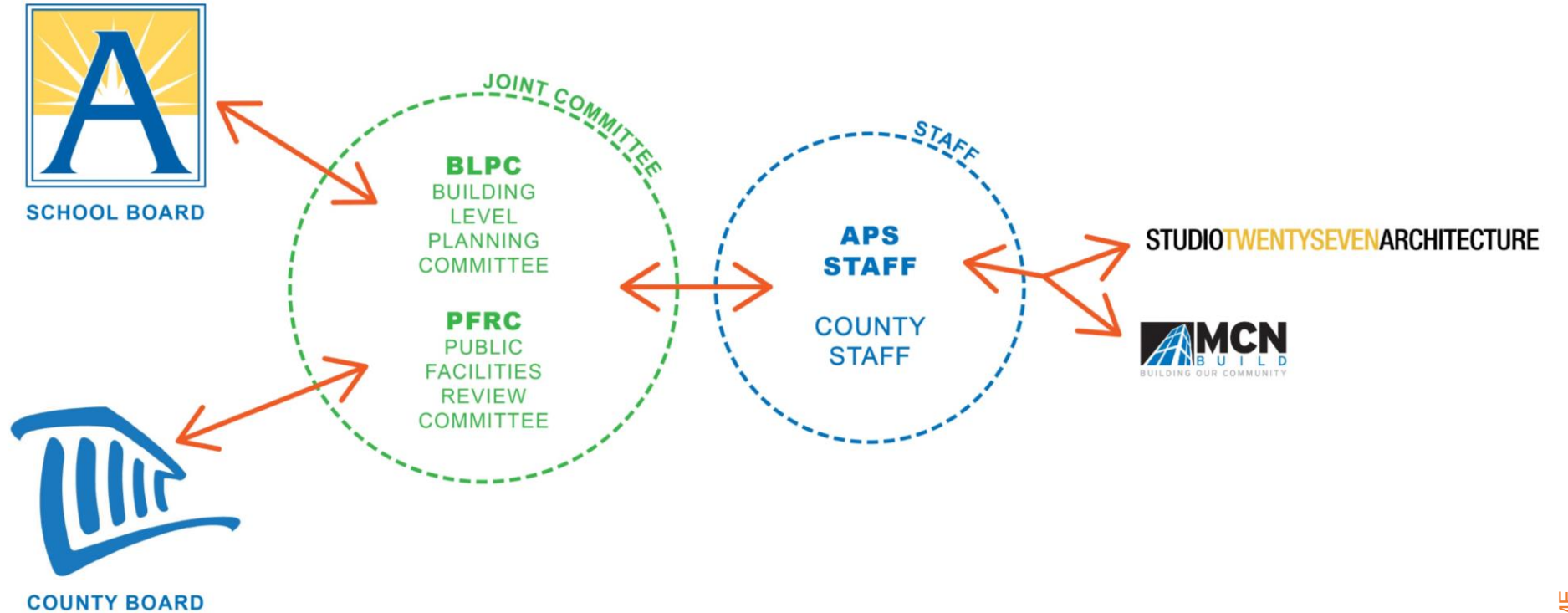
1. Project included in the **FY2019-28 Capital Improvement Plan (CIP)**
2. Renovate the Education Center to both **increase capacity of Washington-Lee** initially, and later to **adapt** to possible future instructional and grade level changes
3. Support **APS Strategic Plan Goals**, specifically for Healthy, Safe, and Supported Students
4. Address capacity by providing **500-600 high school seats**
5. Open by start of school **2021**
6. Spend a maximum project cost of **\$37 million**, using every effort to spend less

Communication Pathways



Owner:
Arlington Public Schools

Primary Contact:
Steve Stricker
APS Project Manager



WELCOME

Coordinated BLPC / PFRC Process

- The BLPC and PFRC will hold joint meetings for most meetings.
- Process will build on the successes of the Fleet and Reed processes, incorporating lessons learned.
- BLPC/PFRC leadership will meet regularly with Board liaisons to develop meeting agendas and discuss critical issues.
- Several members appointed to both BLPC and PFRC.



2 Staff and Team Introductions

**APS
STAFF**



DESIGN TEAM

Architect

STUDIO**TWENTYSEVEN**ARCHITECTURE



Consultants

CMTA
Mechanical Electrical Plumbing Engineer

Ehlert-Bryan
Structural Engineer

Christopher Consultants
Civil Engineer

Grove Slade
Transportation Planner

Educational Systems Planning
Information Technology Planner

Acoustic Design Collaborative
Acoustic Engineer

ECS
Environmental Consultant

TCT
Cost Estimator

Wiss Janney Elstner
Envelope Materials Scientist

Achievement Prep Academy

Southeast Washington, DC



STAFF AND TEAM INTRODUCTIONS

Mamie Lee Campus

Northeast Washington, DC



STAFF AND TEAM INTRODUCTIONS

KIPP DC Webb Campus

Northeast Washington, DC



STAFF AND TEAM INTRODUCTIONS



3 Role of PFRC / BLPC

Public Facilities Review Committee - PFRC

1. PFRC Charge (June 18, 2014) found at: https://arlingtonva.s3.amazonaws.com/wp-content/uploads/sites/5/2014/06/PFRC_Charge_June2014.pdf
2. Mission: to ensure that the highest quality of land use planning, design, transportation planning, and other important community aspects are incorporated into civic projects as assigned to the Committee by the Arlington County Board.
3. Key responsibilities:
 - a. Provide a forum for advisory commission and committee input
 - b. Ensure highest quality of land use planning and design
 - c. Promote compliance with County Comprehensive Plan and other County planning policies
 - d. Provide means for broad-based public participation
 - e. Provide advice to County Board and County Manager

Building Level Planning Committee (BLPC)

1. Based on Policy Implementation Procedure F-5.7 PIP-2
2. School Board approved BLPC Charge found at: <https://www.apsva.us/wp-content/uploads/2018/09/C-4-Education-Center-BLPC-Charge-083018-SB-approved.pdf>
3. Primary role is to serve as the principal communication liaison with community stakeholders
4. Solicit comments from constituency groups and share with the BLPC for consideration
5. Assist APS Staff during schematic design phase by reviewing:
 - a. Site amenities
 - b. Adjacencies between interior spaces and site amenities
 - c. Community use of the building and site
 - d. Impact of project on surrounding community

BLPC Membership

Representing the following stakeholder groups:

- Washington-Lee High School and PTA
- Special Education Parent Teacher Association
- Civic Associations: Ballston-Virginia Square, Cherrydale, and Wavery Hills
- School Board Advisory Councils: School Facilities and Capital Programs (FAC), Instruction (ACI), Budget (BAC), and the Special Education (ASEAC)
- Student Advisory Board (SAB)
- Aquatic community
- Friends of the Planetarium
- Public Facilities Review Committee (PFRC)
- High School and Department of Teaching and Learning Staff
- Department of Facilities and Operations

Arlington Public Schools

1. Develop site-specific educational specifications:
 - a. List of spaces
 - b. Educational vision and pedagogy
 - c. Space character and adaptability
 - d. Detailed floor plan layouts and adjacencies
2. Develop project cost estimates and monitor costs
3. Develop content to support the BLPC & PFRC process

Arlington County

1. Coordinate community review process with APS
2. Provide feedback to APS on applicable County policies
3. Coordinate Use Permit and required building permit approval processes



4 Committee Member Introductions

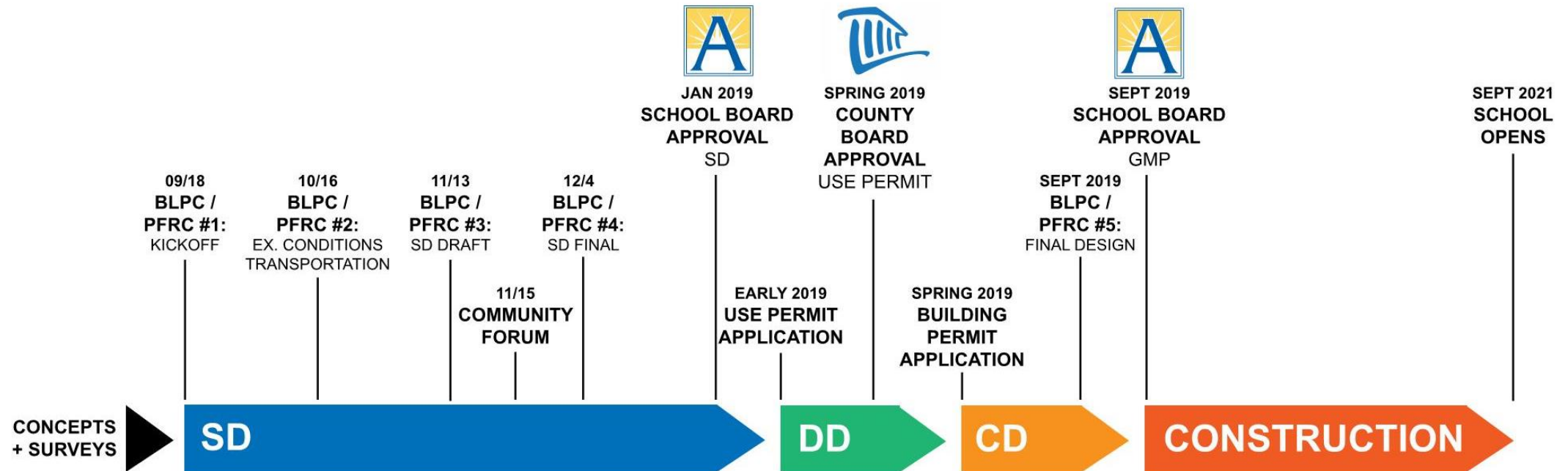
Committee Members

1. Name
2. Representing Group(s)
3. Biggest Concern or Delight about this Project?



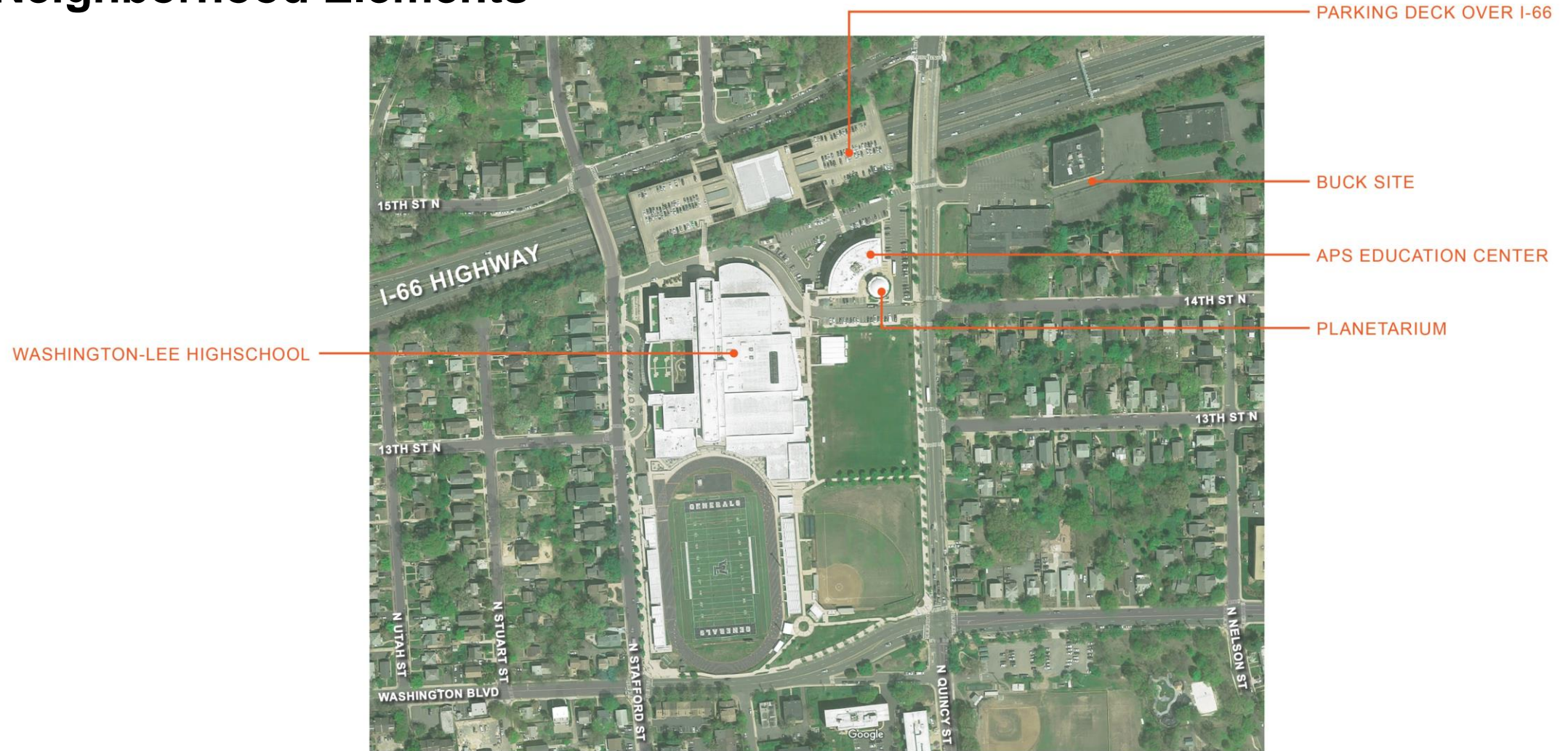
5 Project Overview

Project Timeline



PROJECT OVERVIEW

Neighborhood Elements

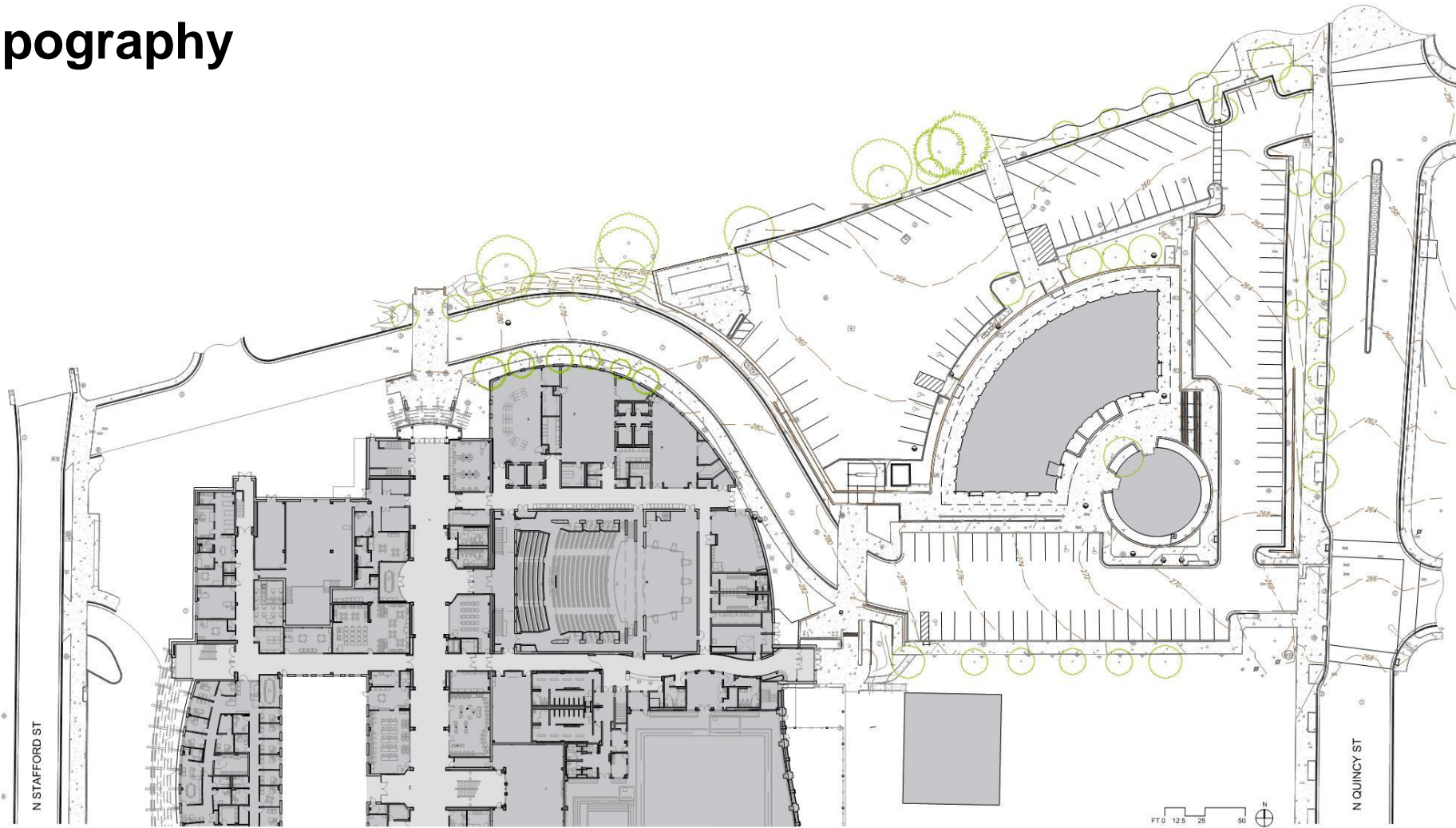


Site Elements

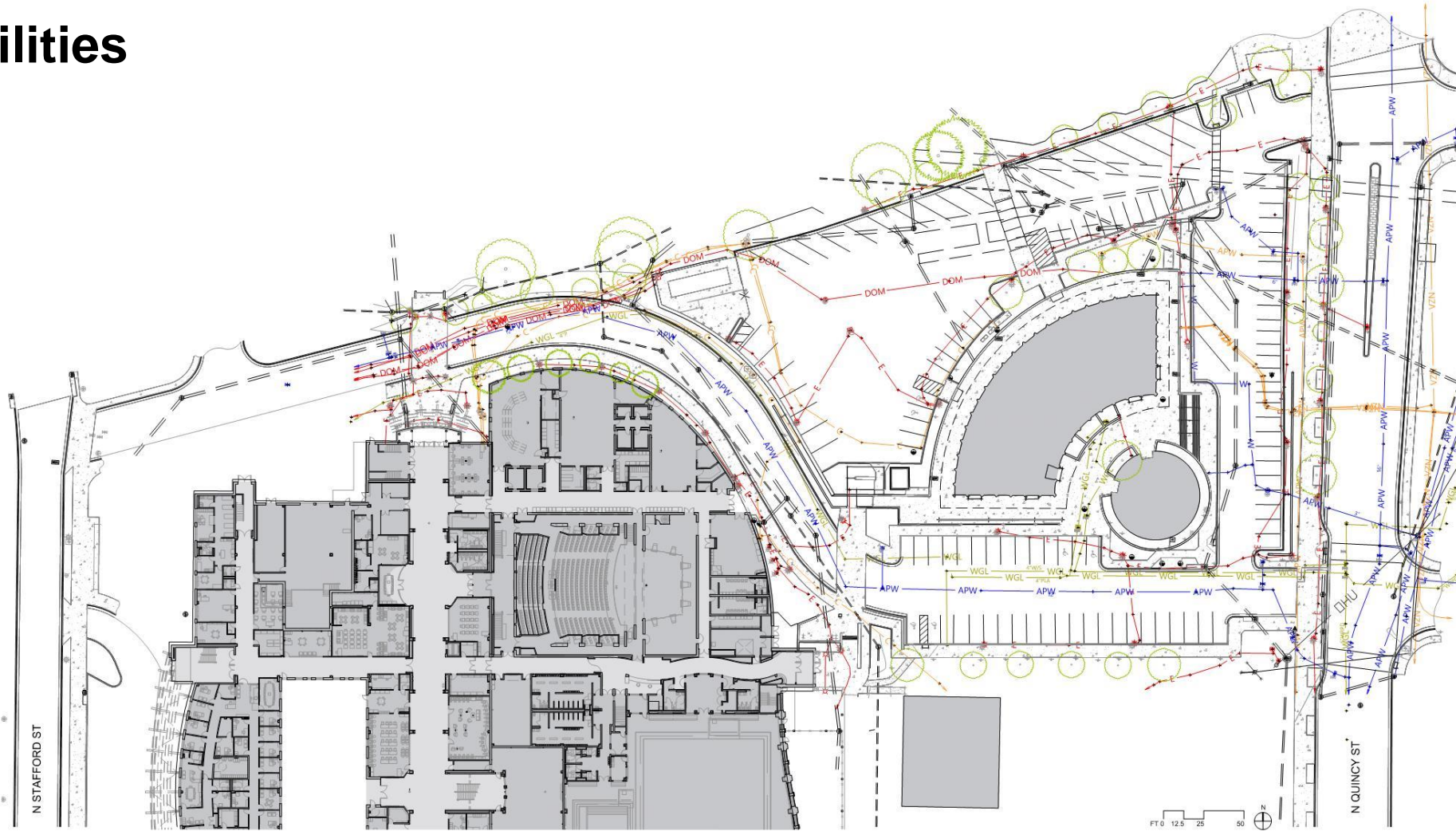


PROJECT OVERVIEW

Site Topography



Site Utilities



PROJECT OVERVIEW



6 Public Comment

7 Next Steps + Adjourn

David M. Brown Planetarium
1426 North Quincy Street

Adjourn

1. As a reminder the APS Project Manager is:
Steve Stricker
(703) 228-7749
steven.stricker@apsva.us
2. Public meeting dates and past presentations are posted on the APS project website:
<https://www.apsva.us/education-center-reuse/>
3. To provide feedback and/or comments to APS use: engage@apsva.us