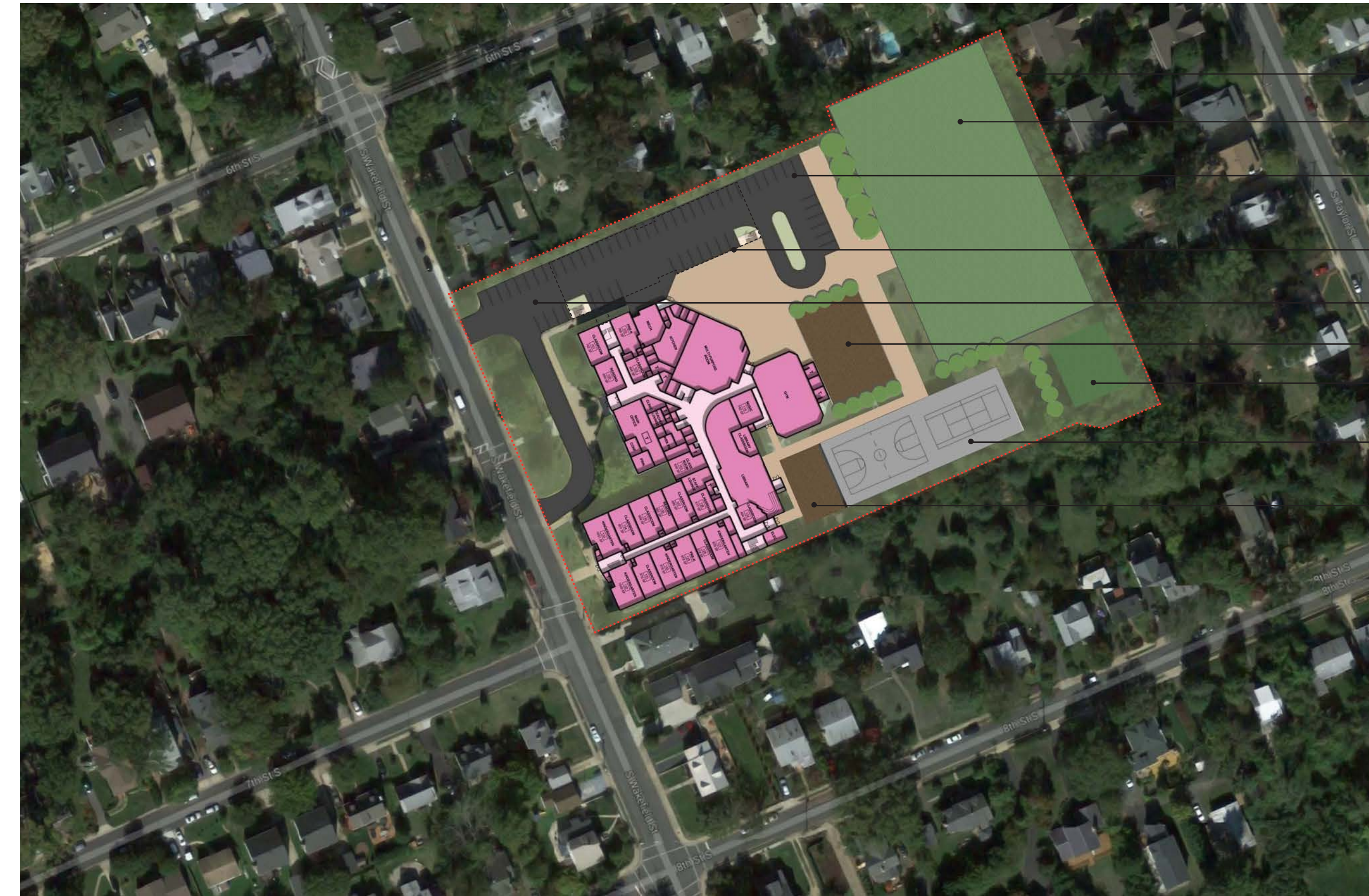


1" = 100'
EXISTING CONDITION

SITE BOUNDARY



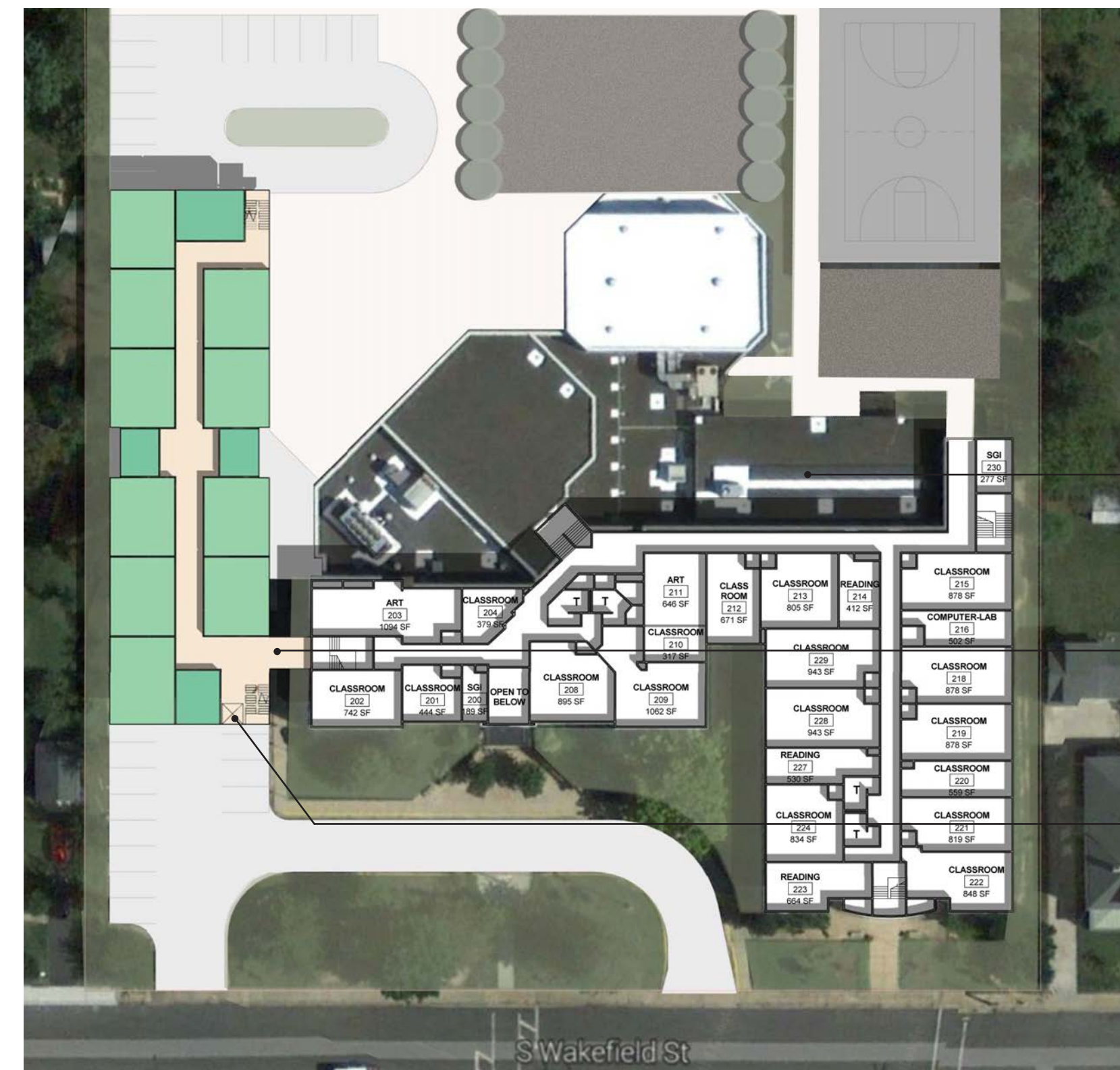
1" = 100'
SITE PLAN

- SITE BOUNDARY
- PLAY FIELD
- NEW CAR LOOP AND STAFF PARKING
- CLASSROOM ADDITION ABOVE
- VISITOR PARKING
- PLAY AREA
- RAIN GARDEN
- TENNIS & BASKETBALL COURTS
- PRE-K & K PLAY AREA



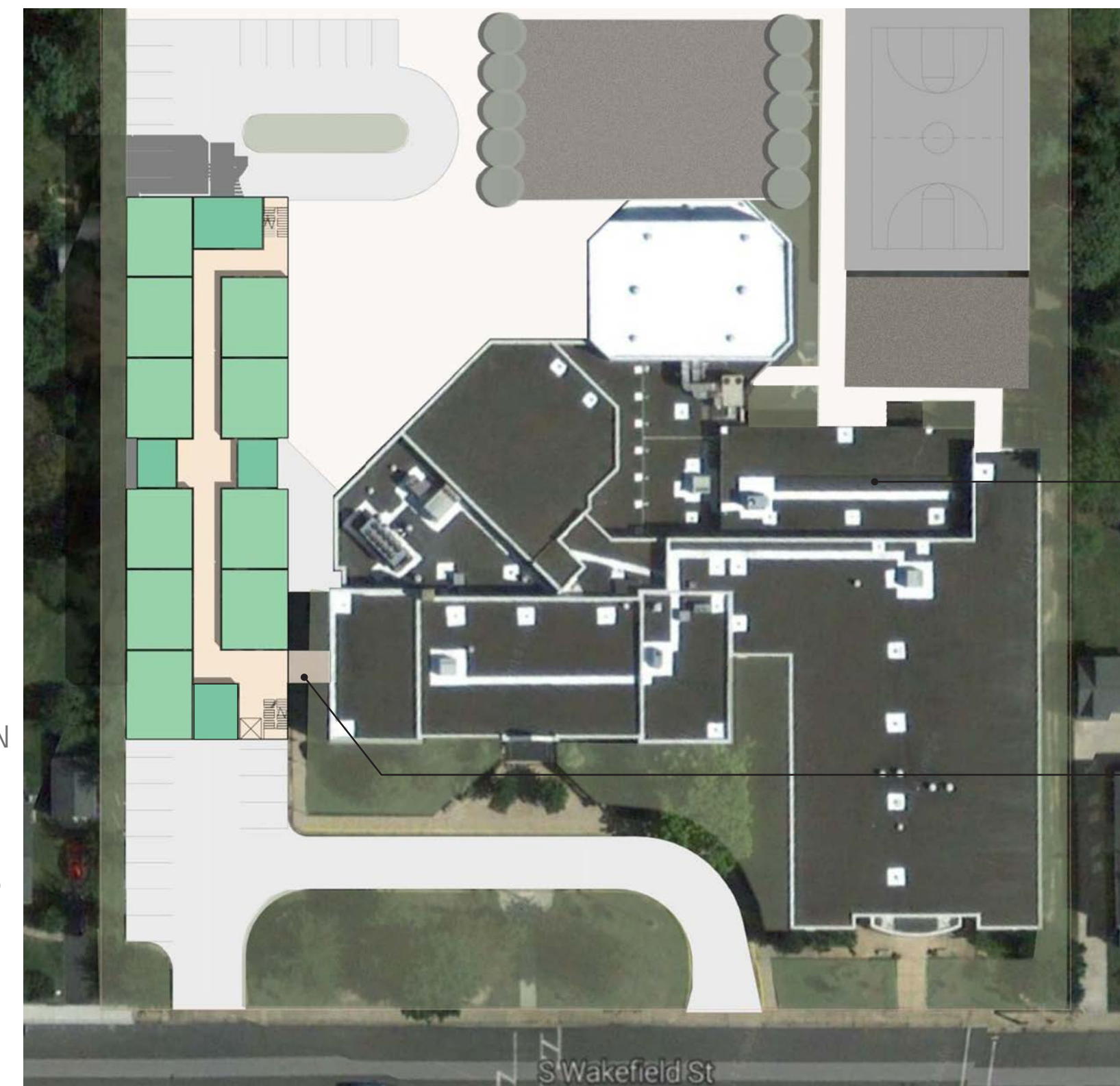
1" = 50'
FLOOR ONE

- ENTRANCE FROM CAR DROP-OFF
- ADDITION ABOVE
- EXPANDED LIBRARY AND CIRCULATION SPACE



1" = 50'
FLOOR TWO

- ROOF BELOW
- ENCLOSED "BRIDGE" BETWEEN EXISTING BLDG & NEW ADDITION
- NEW ELEVATOR BETWEEN LEVELS 2&3



1" = 50'
FLOOR THREE

- ROOF BELOW
- ENCLOSED "BRIDGE" BELOW

- CIRCULATION
- STORAGE/CUST.
- BATHROOMS
- MECHANICAL
- ACADEMIC
- RESOURCE/SUPPORT
- LAB/STUDIO
- INFORMAL/FLEX
- GYM
- LOCKER
- PERFORMANCE ART
- LIBRARY
- DINING / KITCHEN
- FITNESS
- ADMINISTRATION

Pros / Cons

This preliminary scheme suggests a classroom addition on the northern edge of the site, above an expanded parking area and drop-off loop. The elevated addition aligns with and connects to Barcroft's existing second story. The internal circulation pattern grows from an "L" shape to a "Z" shape. This solution orients new classrooms to the north and south, efficiently builds on an extended parking area and avoids sequencing problems that would arise from building on the site of the current relocatable classrooms. The elevated solution maintains access to the back of the site, where various improvements might compensate for the loss of open space. Internally, we propose that the Library be expanded westward and allow for more frontage on important ground floor circulation spaces. We also propose increasing hallway space outside of the library, which could greatly improve the school's congestion issues.